

KONVEYÖR ZİNCİRLER

Konveyör (Endüstriyel) Zincirler nedir?

Konveyör (Endüstriyel) zincirleri, karbon çeliği, paslanmaz çelik, galvanizli çelik gibi birbirine bağlı dayanıklı metal parçalarından oluşur. Çeşitli uygulamalarda malzemeleri kaldırmak ve taşımak için çok çeşitli boyutlarda ve güçlerde mevcuttur.

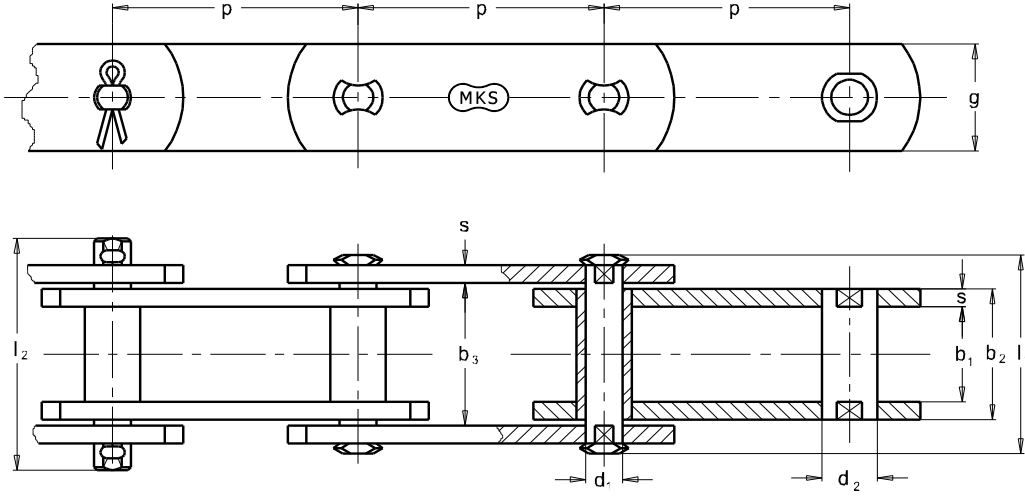
Makelsan Zincir olarak müşterilerimizin talebine göre konveyör zincirini ve buna bağlı dişli sistemini komple bir paket olarak sunmaktayız.

Bununla müşterilerimize sağladığımız;

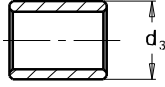
- › Zincir dişli sisteminin çalışabilirliğine ilişkin tam garanti
- › Tek tedarikçiden satın alma ile maliyet ve zaman avantajı
- › Olası bir hata durumunda kolay ve hızlı müdahale avantajı bizi rakiplerimizden ayırtıran en önemli faktörlerdendir.

Makelsan Zincir olarak farklı sektörlerin ihtiyaçları doğrultusunda tüm özel uygulamalar için sipariş üzerine yüksek hassasiyette zincirler üretmekteyiz. Ürünlerimizi “MKS Zincir” markamızla piyasaya sunmaktayız. Numune veya teknik resim bazlı ürün yelpazemize ek olarak, müşterilerimizle yaptığımız istişareler sonucunda yeni tasarımlar ve üretimler de yapmaktayız. Yüksek dereceli rafine çeliklerimiz sayesinde müşterilerimizin farklı ihtiyaçlarına en yüksek kalitede ürünlerle cevap veriyoruz. Hızlı üretim ve servis ile de bu düşüncemizi destekliyoruz. Özel zincir ve dişli üretimimizin yanı sıra 16 BS/ASA ve daha büyük ölçülerde standart zincir üretimimiz de mevcuttur.

Konveyör Zincirler DIN 8165

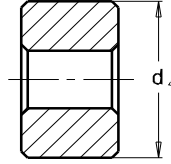


Makaralar



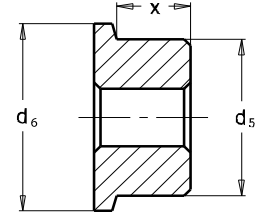
Typ S

Küçük Makara



Typ P

Taşkın Makara



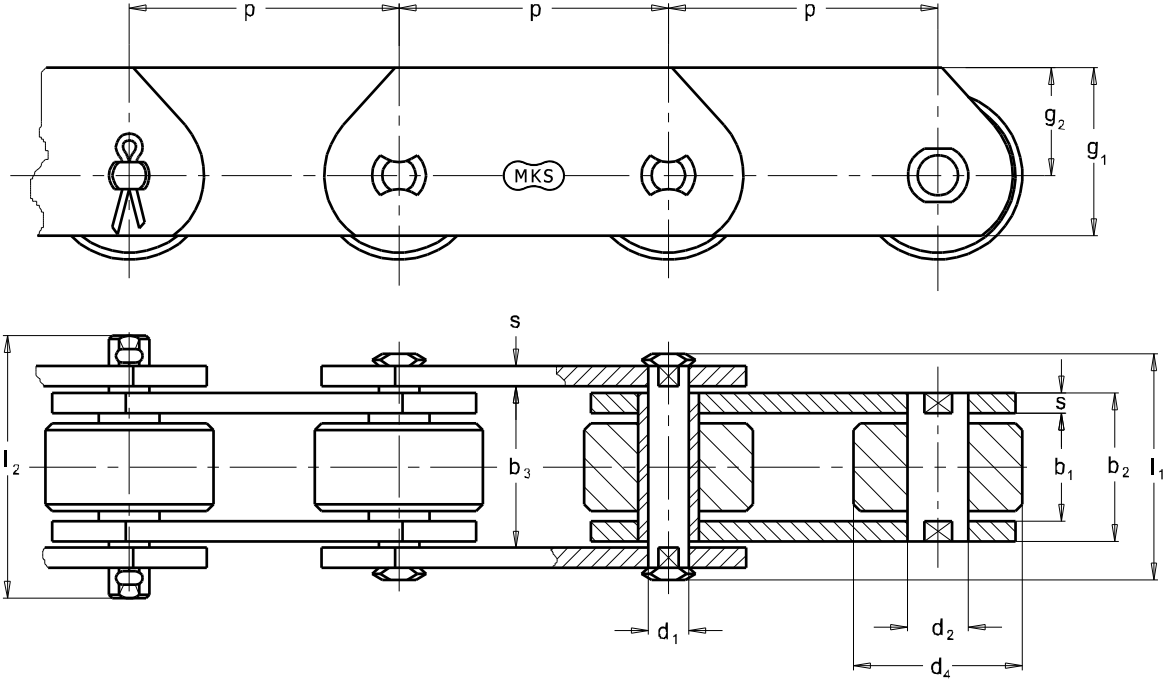
Typ F

Ray Makara

MAKELSAN NO.	p mm								b ₁ mm min	b ₂ mm max	b ₃ mm min	d ₁ mm	d ₂ mm B	d ₃ mm S	d ₄ mm P	d ₅ mm F	d ₆ mm F	x mm	l ₁ mm max	l ₂ mm max	g mm	s mm	f mm ²	F _B kN min.	F _A kN
FV 40	40	50	63	80	100	125	160	-	18	24,5	25,0	10	15	20	32	40	48	12,5	37	44	26	3	245	40	5,71
FV 63	50	63	80	100	125	160	200	-	22	30,5	31,0	12	18	26	40	50	60	15,5	46	55	30	4	366	63	9,00
FV 90	50	63	80	100	125	160	200	250	25	35,5	36,0	14	20	30	48	63	73	18,5	53	62	35	5	497	90	12,85
FV 112	80	100	125	160	200	250	315	-	30	42,5	43,0	16	22	32	55	72	87	22,0	63	72	40	6	680	112	16,00
FV 140	80	100	125	160	200	250	315	400	35	47,5	48,0	18	26	36	60	80	95	26,0	68	80	45	6	855	140	20,00
FV 180	-	100	125	160	200	250	315	400	45	61,5	62,5	20	30	42	70	100	120	35,0	86	100	50	8	1230	180	25,71
FV 250	-	-	125	160	200	250	315	400	55	72,0	73,0	26	36	50	80	125	145	42,0	98	114	60	8	1870	250	35,71
FV 315	-	-	125	160	200	250	315	400	65	86,0	87,0	30	42	60	90	140	170	50,0	117	133	70	10	2580	315	45,00
FV 400	-	-	-	160	200	250	315	400	70	96,0	97,0	32	44	60	100	150	185	54,0	131	141	70	12	3070	400	57,14
FV 500	-	-	160	200	250	315	400	500	80	106	107	36	50	70	110	160	195	60,0	141	151	80	12	3820	500	71,42
FV 630	-	-	-	200	250	315	400	500	90	116	117	42	56	80	120	170	210	66,0	153	163	100	12	4870	630	90,00

Numune ya da teknik çizime göre üretim yapılır.

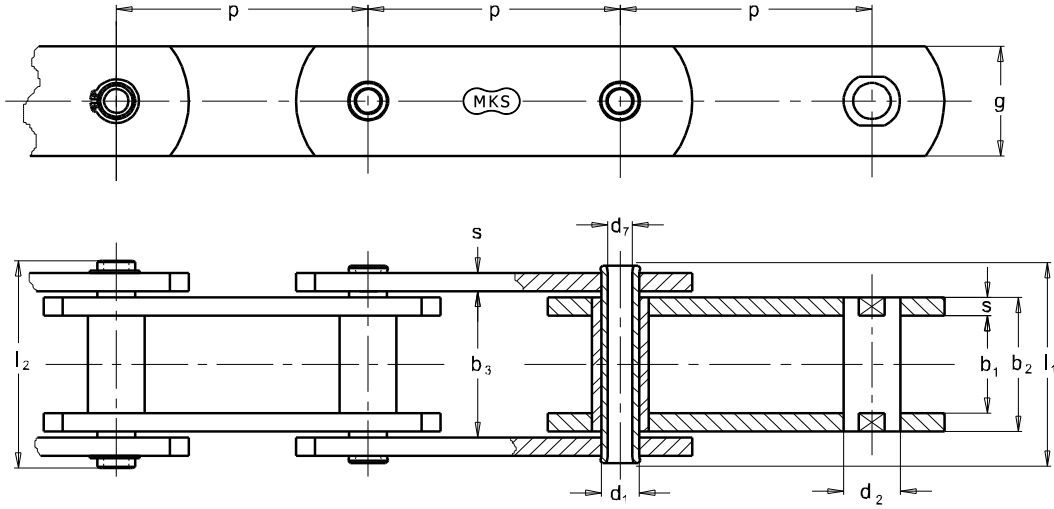
Konveyör Zincirler Zincirleri Ağır Sanayi Zincirleri DIN 8165



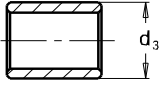
MAKELSAN NO.	p mm								b ₁ mm min	b ₂ mm max	b ₃ mm min	d ₁ mm	d ₂ mm	d ₄ mm p	g ₁ mm	g ₂ mm	s mm	l ₁ mm max	l ₂ mm max	f mm ²	F _B kN min.	F _A kN
FVT 40	40	50	63	80	100	125	160	-	18	24,5	25,0	10	15	32	35	22,0	3	37	44	245	40	5,71
FVT 63	50	63	80	100	125	160	200	-	22	30,5	31,0	12	18	40	40	25,0	4	46	55	366	63	9,00
FVT 90	50	63	80	100	125	160	200	250	25	35,5	36,0	14	20	48	45	27,5	5	53	62	497	90	12,85
FVT 112	80	100	125	160	200	250	315	-	30	42,5	43,0	16	22	55	50	30,0	6	63	72	680	112	16,00
FVT 140	80	100	125	160	200	250	315	400	35	47,5	48,0	18	26	60	60	37,5	6	68	80	855	140	20,00
FVT 180	-	100	125	160	200	250	315	400	45	61,5	62,5	20	30	70	70	45,0	8	86	100	1230	180	25,71
FVT 250	-	-	125	160	200	250	315	400	55	72,0	73,0	26	36	80	80	50,0	8	98	114	1870	250	35,71
FVT 315	-	-	125	160	200	250	315	400	65	86,0	87,0	30	42	90	90	55,0	10	117	133	2580	315	45,00
FVT 400	-	-	-	160	200	250	315	400	70	96,0	97,0	32	44	100	90	55,0	12	131	141	3070	400	57,14
FVT 500	-	-	160	200	250	315	400	500	80	106,0	107,0	36	50	110	100	60,0	12	141	151	3820	500	71,42
FVT 630	-	-	-	200	250	315	400	500	90	116,0	117,0	42	56	120	120	70,0	12	153	163	4870	630	90,00

Numune ya da teknik çizime göre üretim yapılır.

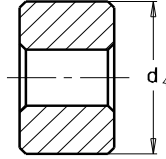
Konveyör Zincirleri Pim Delikli DIN 8165



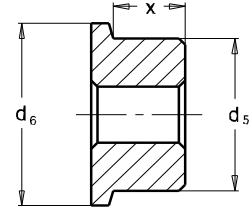
Makaralar



Typ S
Sabit Makara



Typ P
Taşkın Makara

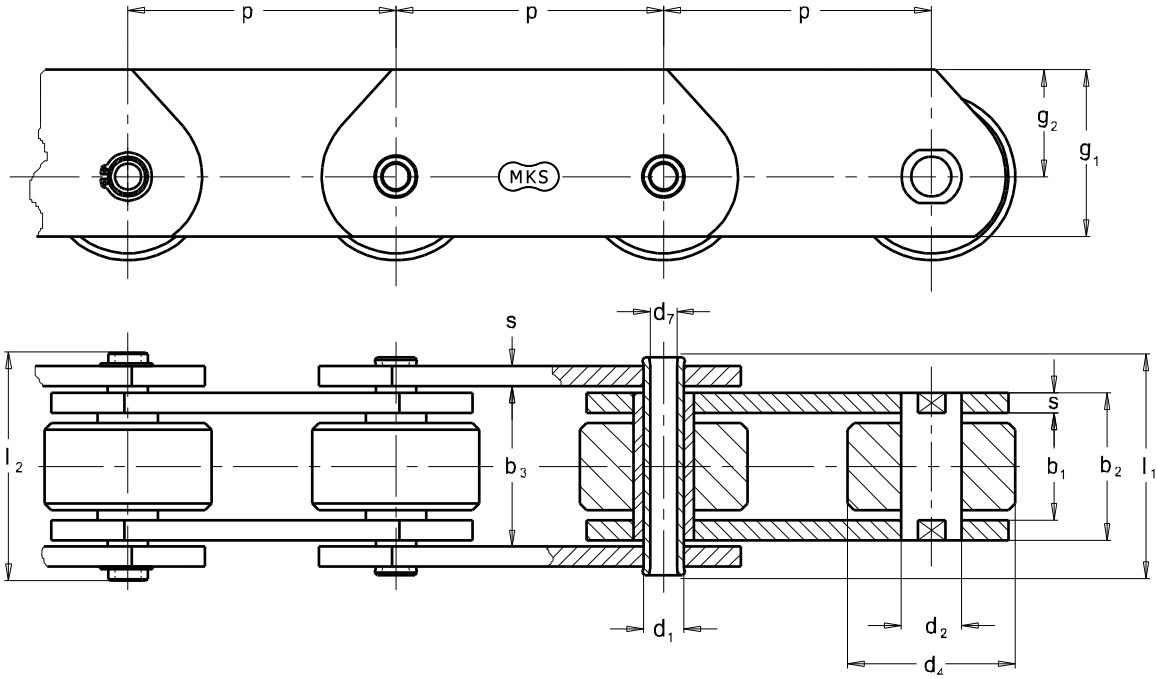


Typ F
Ray Makara

MAKELSAN NO.	p mm							b ₁ mm min	b ₂ mm max	b ₃ mm min	d ₁ mm	d ₂ mm B	d ₃ mm S	d ₄ mm P	d ₅ mm F	d ₆ mm F	d ₇ mm	x mm	l ₁ mm max	l ₂ mm max	g mm	s mm	f mm ²	F _B kN min.	F _A kN	
FVC 63	50	63	80	100	125	160	200	-	22	30,5	31,0	12	18	26	40	50	60	8,2	15,5	46	55	30	4	366	46	6,57
FVC 90	50	63	80	100	125	160	200	250	25	35,5	36,0	14	20	30	48	63	73	10,2	18,5	53	62	35	5	497	55	7,85
FVC 112	80	100	125	160	200	250	315	-	30	42,5	43,0	16	22	32	55	72	87	11,2	22,0	63	72	40	6	680	78	11,14
FVC 140	80	100	125	160	200	250	315	400	35	47,5	48,0	18	26	36	60	80	95	12,2	26,0	68	80	45	6	855	105	15,00
FVC 180	-	100	125	160	200	250	315	400	45	61,5	62,5	20	30	42	70	100	120	14,3	35,0	86	100	50	8	1230	118	16,85
FVC 250	-	-	125	160	200	250	315	400	55	72,0	73,0	26	36	50	80	125	145	18,3	42,0	98	114	60	8	1870	206	29,42
FVC 315	-	-	125	160	200	250	315	400	65	86,0	87,0	30	42	60	90	140	170	20,3	50,0	117	133	70	10	2580	290	41,42

Numune ya da teknik çizime göre üretim yapılır.

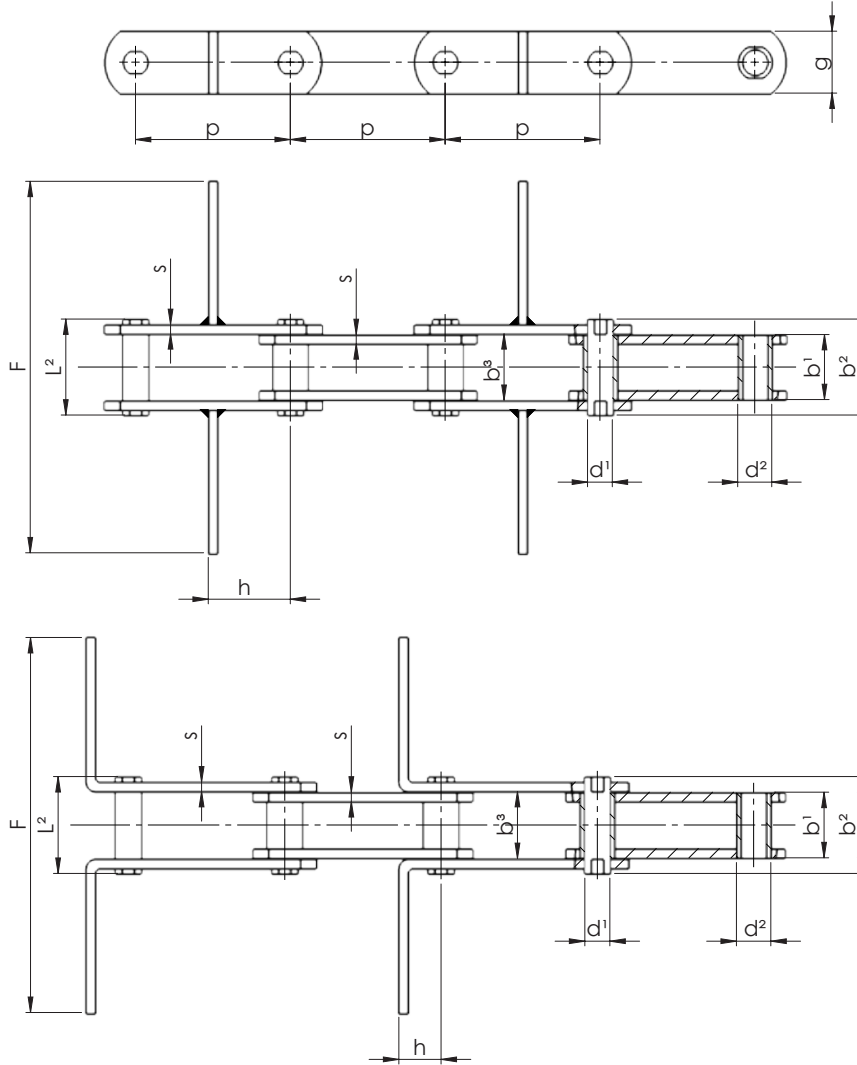
Konveyör Zincirleri Ağır Sanayi Pim Delikli Zincirler DIN 8165



MAKELSAN NO.	p mm								b ₁ mm min	b ₂ mm max	b ₃ mm min	d ₁ mm	d ₂ mm	d ₄ mm p	d ₇ mm	g ₁ mm	g ₂ mm	s mm	l ₁ mm max	l ₂ mm max	f mm ²	F _B kN min.	F _A kN
	50	63	80	100	125	160	200	-															
FVCT 63	50	63	80	100	125	160	200	-	22	30,5	31,0	12	18	40	8,2	40	25,0	4	46	55	366	46	6,57
FVCT 90	50	63	80	100	125	160	200	250	25	35,5	36,0	14	20	48	10,2	45	27,5	5	53	62	497	55	7,85
FVCT 112	80	100	125	160	200	250	315	-	30	42,5	43,0	16	22	55	11,2	50	30,0	6	63	72	680	78	11,14
FVCT 140	80	100	125	160	200	250	315	400	35	47,5	48,0	18	26	60	12,2	60	37,5	6	68	80	855	105	15,00
FVCT 180	-	100	125	160	200	250	315	400	45	61,5	62,5	20	30	70	14,3	70	45,0	8	86	100	1230	118	16,85
FVCT 250	-	-	125	160	200	250	315	400	55	72,0	73,0	26	36	80	18,3	80	50,0	8	98	114	1870	206	29,42
FVCT 315	-	-	125	160	200	250	315	400	65	86,0	87,0	30	42	90	20,3	90	55,0	10	117	133	2580	290	41,42

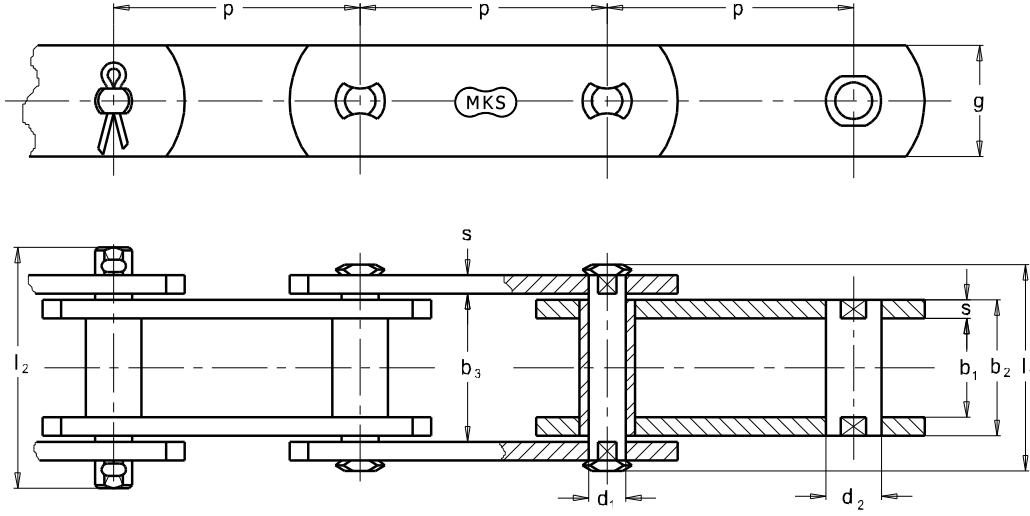
Numune ya da teknik çizime göre üretim yapılır.

Konveyör Zincirleri Kazıyıcı Zincirler DIN 8165

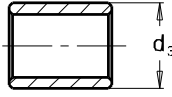


MAKELSAN NO.	p mm								b ₁ mm min	b ₂ mm max	b ₃ mm min	d ₁ mm	d ₂ mm	f mm	g mm	h mm	s mm	l ₂ mm max	f mm ²	F _B kN min.	F _A kN
FVR 40	50	63	80	100	125	160	-	-	18	24,5	25	10	15	*	26	20	3	55	245	40	5,71
FVR 63	50	63	80	100	125	160	-	-	22	30,5	31	12	18	*	30	25	4	55	366	63	9,00
FVR 90	50	63	80	100	125	160	200	250	25	35,5	36	14	20	*	35	30	5	62	497	90	12,85
FVR 112	80	100	125	160	200	250	315	-	30	42,5	43	16	22	*	40	35	6	72	680	112	16,00
FVR 140	80	100	125	160	200	250	315	400	35	47,5	48	18	26	*	45	45	6	80	855	140	20,00
FVR 180	-	100	125	160	200	250	315	400	45	61,5	63	20	30	*	50	50	8	100	1230	180	25,71
FVR 250	-	-	125	160	200	250	315	400	55	72	73	26	36	*	60	55	8	114	1870	250	35,71
FVR 315	-	-	-	160	200	250	315	400	65	86	87	30	42	*	70	60	10	133	2580	315	45,00

Konveyör Zincirleri DIN 8167, ISO 1977

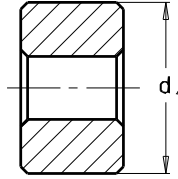


Makaralar - DIN 8169



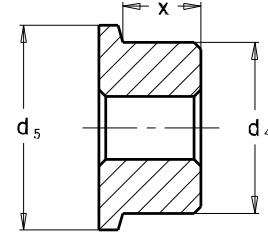
Typ S

Küçük Makara



Typ P

Taşkın Makara



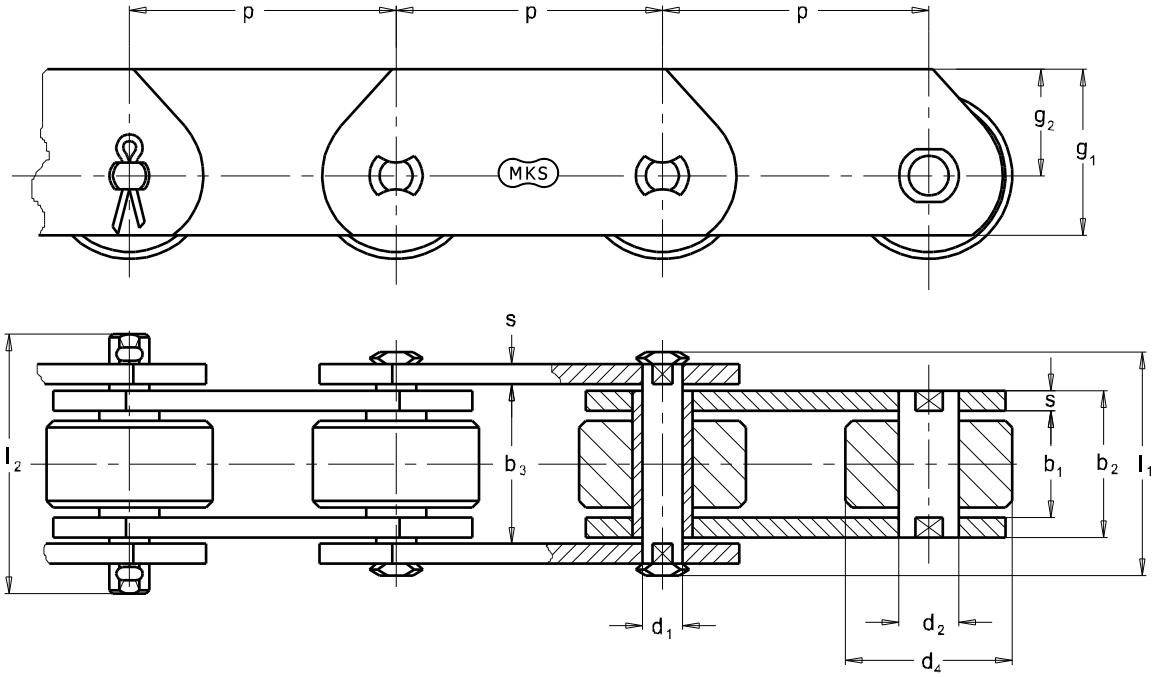
Typ F

Ray Makara

MAKELSAN NO.	p mm								b ₁ mm min	b ₂ mm max	b ₃ mm min	d ₁ mm	d ₂ mm B	d ₃ mm S	d ₄ mm P	d ₅ mm F	χ mm	l ₁ mm max	l ₂ mm max	g mm	s mm	f mm ²	F _B kN min.	F _A kN
M 20	40	50	63	80	100	125	160	16	22	22,2	6,0	9,0	12,5	25	30	11,5	35	49	18	2,5	132	20	2,85	
M 28	50	63	80	100	125	160	200	18	25	25,2	7,0	10,0	15,0	30	36	13,0	40	56	20	3,0	175	28	4,00	
M 40	63	80	100	125	160	200	250	20	28	28,3	8,5	12,5	18,0	36	42	14,0	45	63	25	3,5	238	40	5,71	
M 56	63	80	100	125	160	200	250	24	33	33,3	10,0	15,0	21,0	42	50	17,5	52	72	30	4,0	330	56	8,00	
M 80	80	100	125	160	200	250	315	28	39	39,4	12,0	18,0	25,0	50	60	20,5	62	86	35	5,0	468	80	11,42	
M 112	80	100	125	160	200	250	315	32	45	45,5	15,0	21,0	30,0	60	70	23,0	73	101	40	6,0	675	112	16,00	
M 160	100	125	160	200	250	315	400	37	52	52,5	18,0	25,0	36,0	70	85	26,5	85	117	50	7,0	936	160	22,85	
M 224	125	160	200	250	315	400	500	43	60	60,6	21,0	30,0	42,0	85	100	31,0	98	134	60	8,0	1260	224	32,00	
M 315	160	200	250	315	400	500	630	48	70	70,7	25,0	36,0	50,0	100	120	34,0	112	154	70	10,0	1750	315	45,00	
M 450	-	200	250	315	400	500	630	56	82	82,8	30,0	42,0	60,0	120	140	37,0	135	185	80	12,0	2460	450	64,28	
M 630	-	200	250	315	400	500	630	66	96	97,0	36,0	50,0	70,0	140	170	45,0	147	200	100	14,0	3456	630	90,00	
M 900	-	-	250	315	400	500	630	78	112	113,0	44,0	60,0	85,0	170	210	54,0	167	220	120	16,0	4928	900	128,57	

Numune ya da teknik çizime göre üretim yapılır.

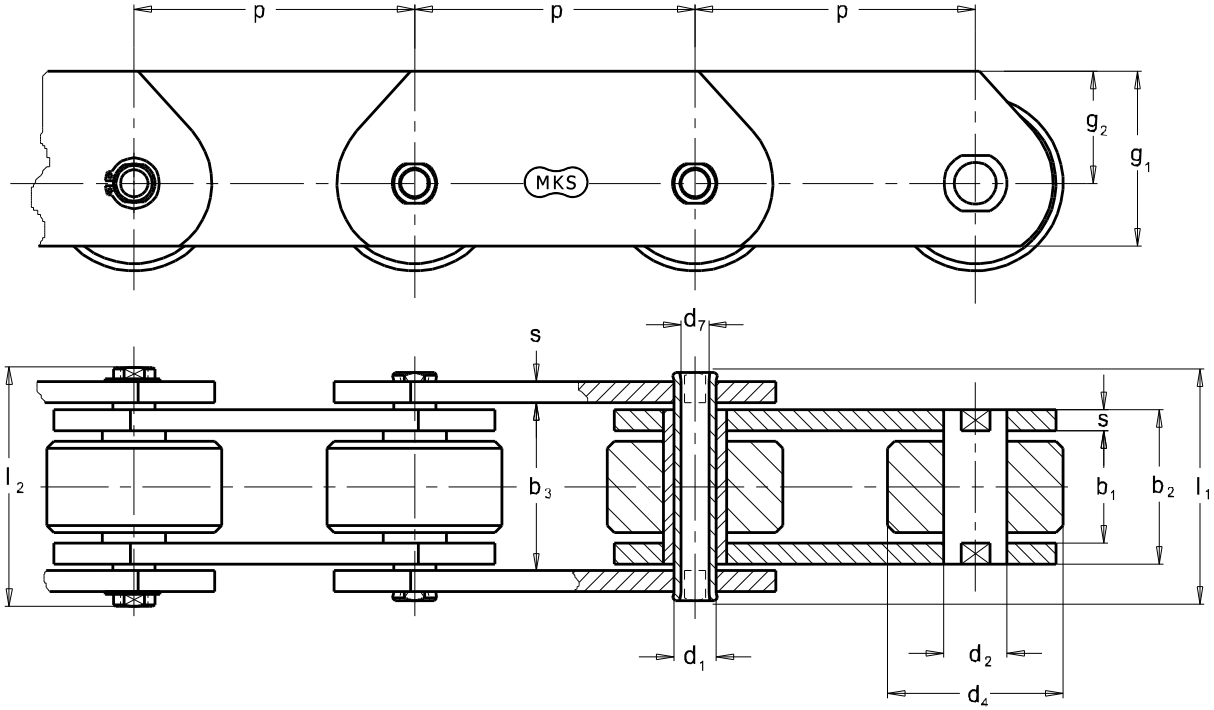
Konveyör Zincirleri Ağır Sanayi Zincirleri DIN 8167, ISO 1977



MAKELSAN NO.	p mm								b ₁ mm min	b ₂ mm max	b ₃ mm min	d ₁ mm	d ₂ mm	d ₄ mm p	g ₁ mm	g ₂ mm	s mm	l ₁ mm max	l ₂ mm max	f mm ²	F _B kN min.	F _A kN
MT 20	40	50	63	80	100	125	160	16	22	22,2	6,0	9,0	25	25	16,0	2,5	35	49	132	20	2,85	
MT 28	50	63	80	100	125	160	200	18	25	25,2	7,0	10,0	30	30	20,0	3,0	40	56	175	28	4,00	
MT 40	63	80	100	125	160	200	250	20	28	28,3	8,5	12,5	36	35	22,5	3,5	45	63	238	40	5,71	
MT 56	63	80	100	125	160	200	250	24	33	33,3	10,0	15,0	42	45	30,0	4,0	52	72	330	56	8,00	
MT 80	80	100	125	160	200	250	315	28	39	39,4	12,0	18,0	50	50	32,5	5,0	62	86	468	80	11,42	
MT 112	80	100	125	160	200	250	315	32	45	45,5	15,0	21,0	60	60	40,0	6,0	73	101	675	112	16,00	
MT 160	100	125	160	200	250	315	400	37	52	52,5	18,0	25,0	70	70	45,0	7,0	85	117	936	160	22,85	
MT 224	125	160	200	250	315	400	500	43	60	60,6	21,0	30,0	85	90	60,0	8,0	98	134	1260	224	32,00	
MT 315	160	200	250	315	400	500	630	48	70	70,7	25,0	36,0	100	100	65,0	10,0	112	154	1750	315	45,00	
MT 450	-	200	250	315	400	500	630	56	82	82,8	30,0	42,0	120	120	80,0	12,0	135	185	2460	450	64,28	
MT 630	-	200	250	315	400	500	630	66	96	97,0	36,0	50,0	140	140	90,0	14,0	147	200	3456	630	90,00	
MT 900	-	-	250	315	400	500	630	78	112	113,0	44,0	60,0	170	180	120	16,0	167	220	4928	900	128,57	

Numune ya da teknik çizime göre üretim yapılır.

Konveyör Zincirleri Pim Delikli Zincirler, DIN 8168, ISO 1977

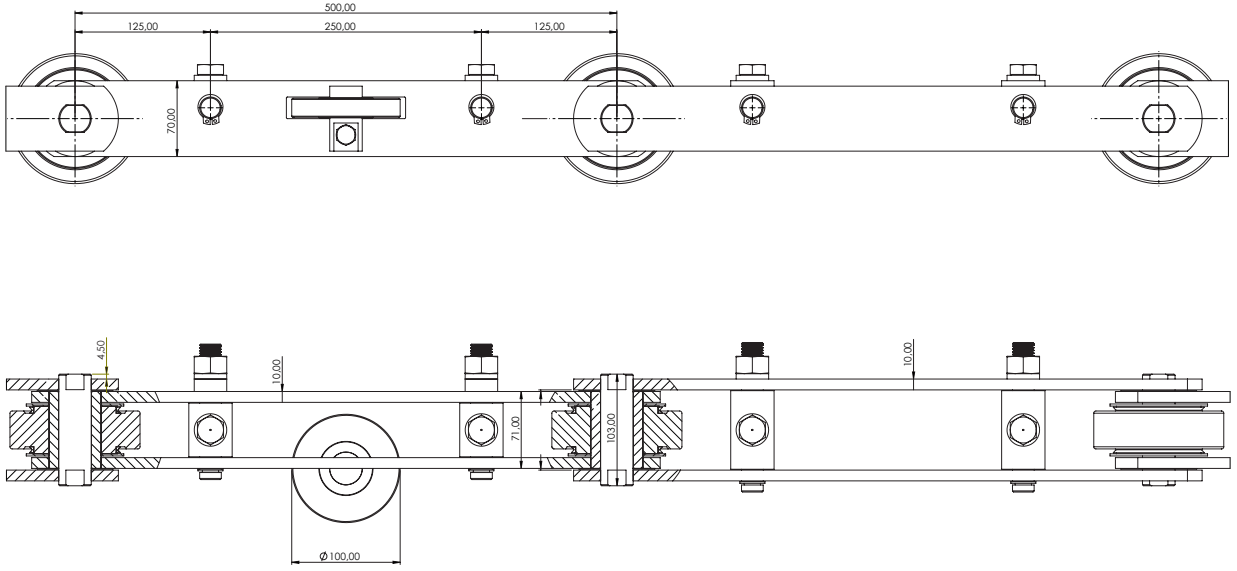


MAKELSAN NO.	p mm						b ₁ mm min	b ₂ mm max	b ₃ mm min	d ₁ mm	d ₂ mm	d ₄ mm p	d ₇ mm	g ₁ mm	g ₂ mm	s mm	l ₁ mm max	l ₂ mm max	f mm ²	F _B kN min.	F _A kN	
	MCT 28	50	63	63	100	125	160	200	20	28	28,3	13,0	17,5	36	8,2	35	22,5	3,5	42	47	364	28
MCT 56	63	80	100	125	160	200	250	24	33	33,3	15,5	21,0	50	10,2	50	32,5	4,0	48	54	511	56	8,0
MCT 112	80	100	125	160	200	250	315	32	45	45,5	22,0	29,0	70	14,3	70	45,0	6,0	67	73	990	112	16,0
MCT 224	125	160	200	250	315	400	500	43	60	60,6	31,0	41,0	100	20,3	100	65,0	8,0	90	96	1860	224	32,0

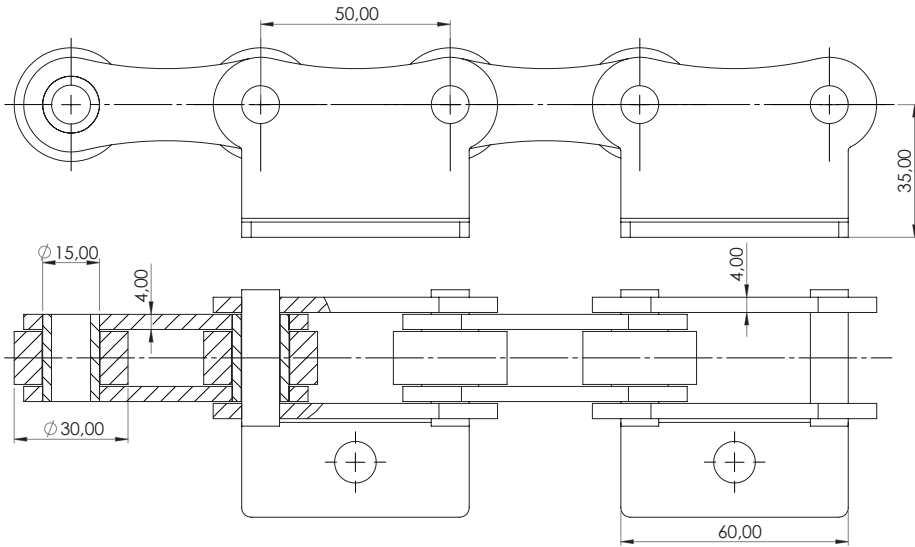
Numune ya da teknik çizime göre üretim yapılır.

Özel Üretim Zincirler

MKS A

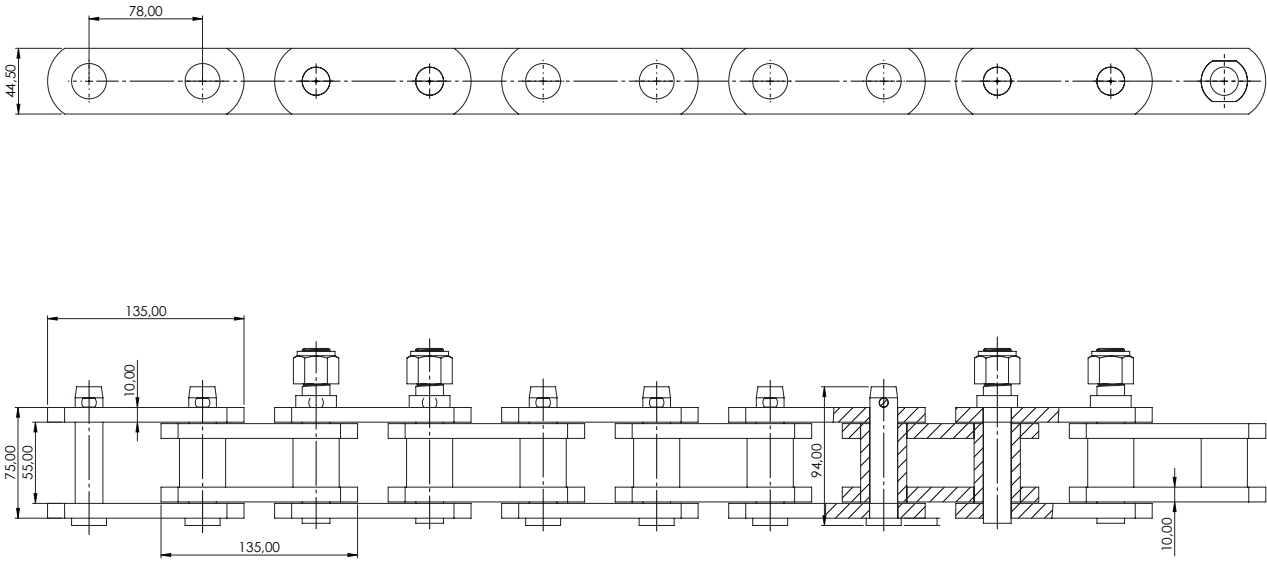


MKS B

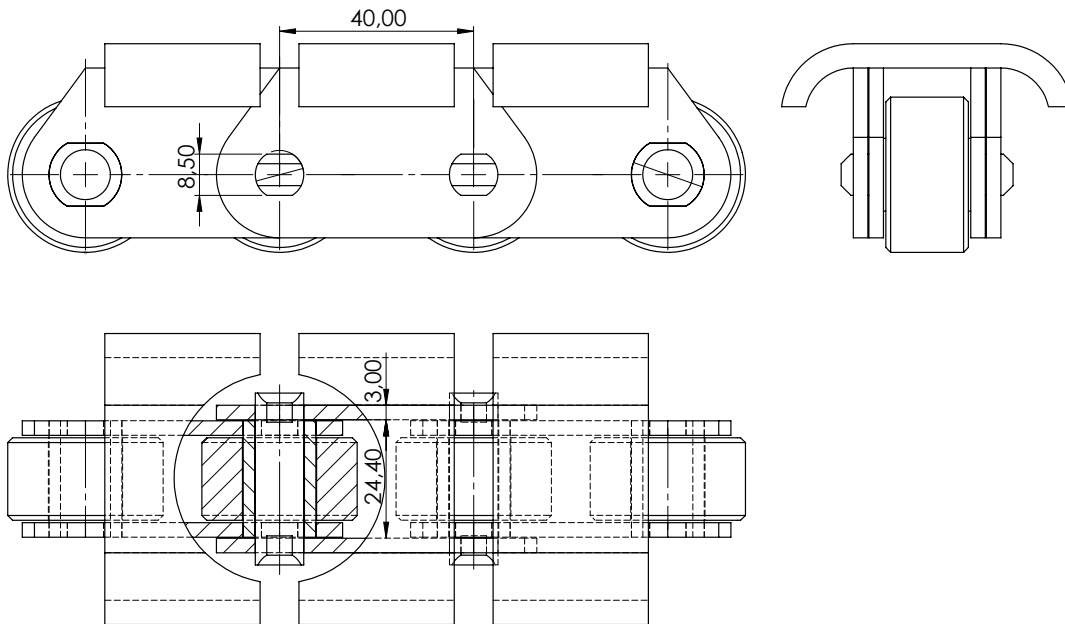


Özel Üretim Zincirler

MKS C

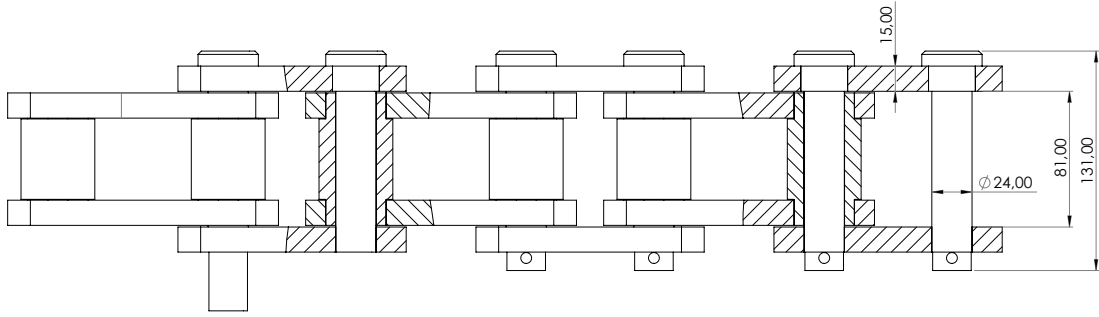
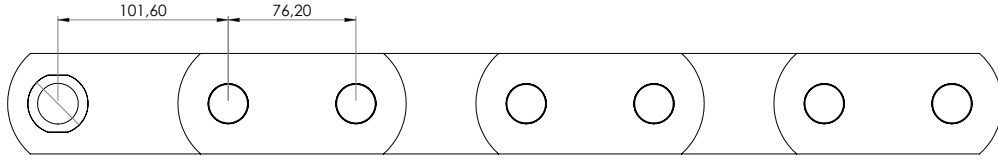


MKS D

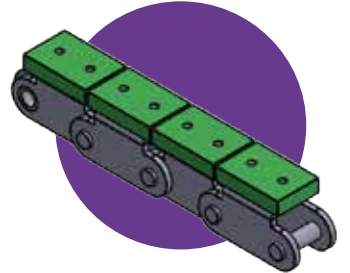
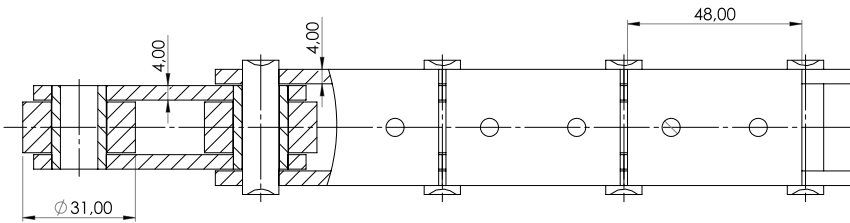
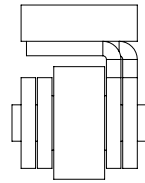
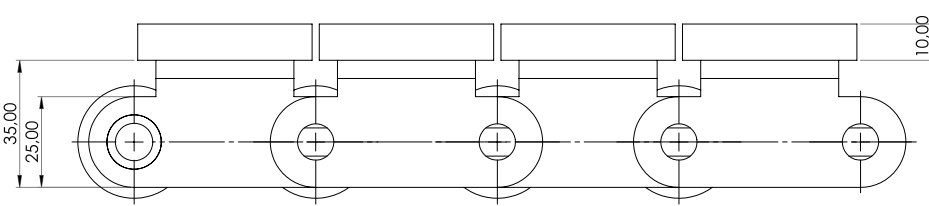


Özel Üretim Zincirler

MKS E

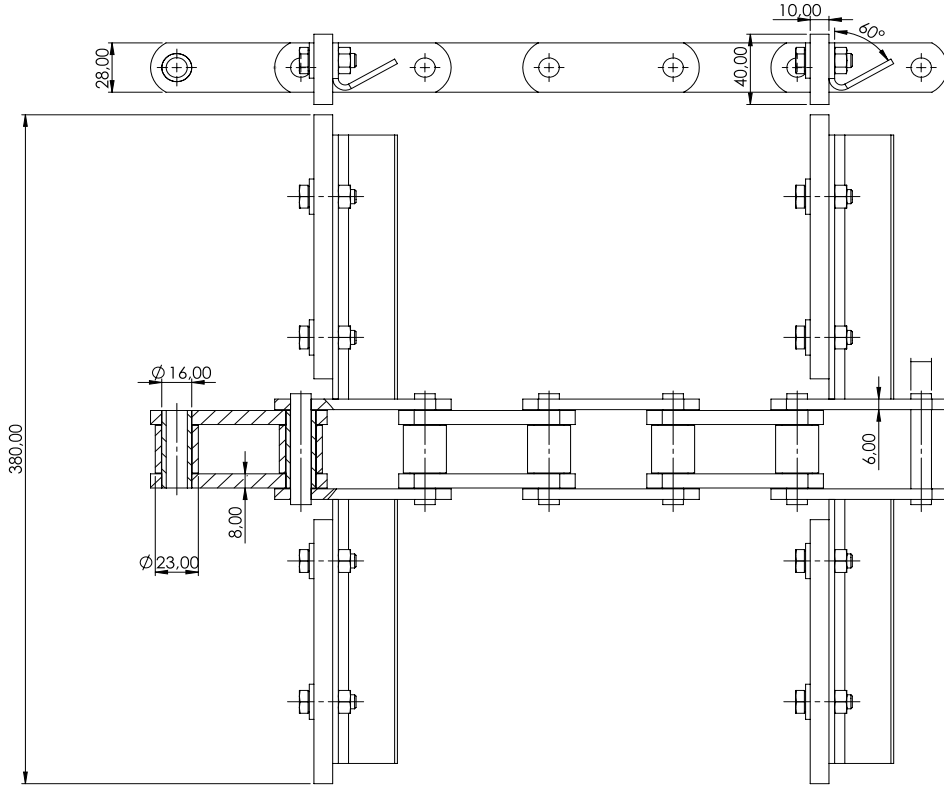


MKS F

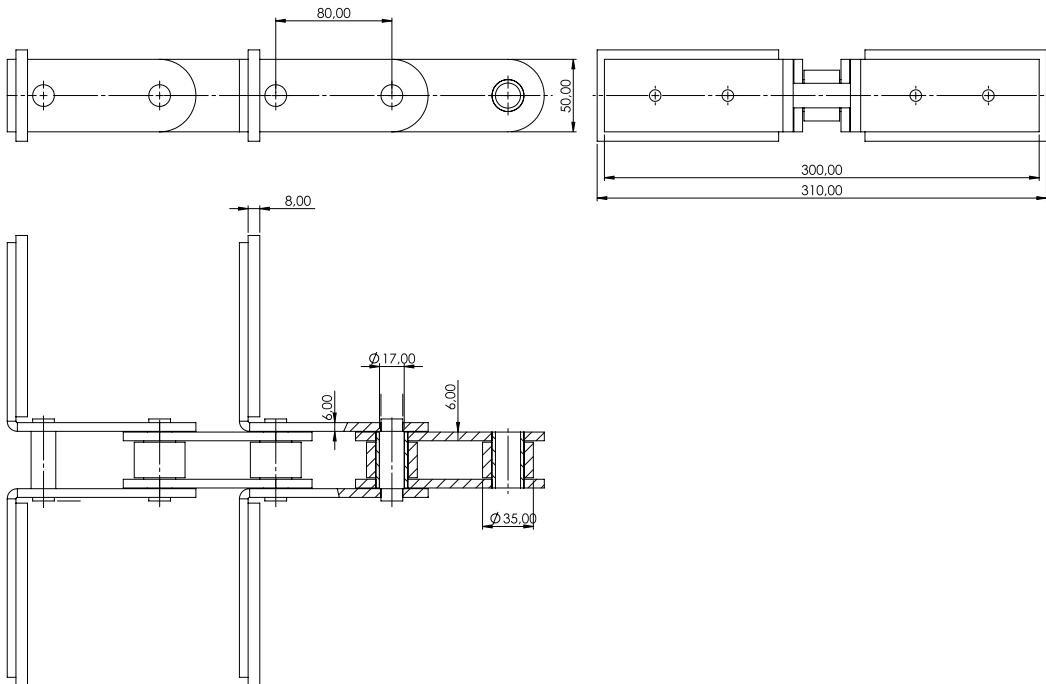


Kazıyıcı Zincirler

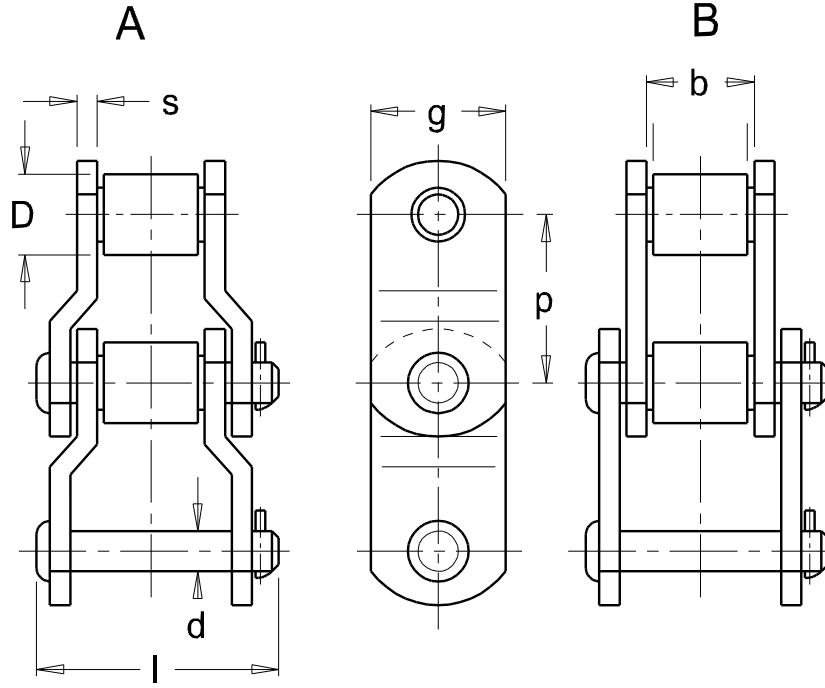
SCP A



SCP B



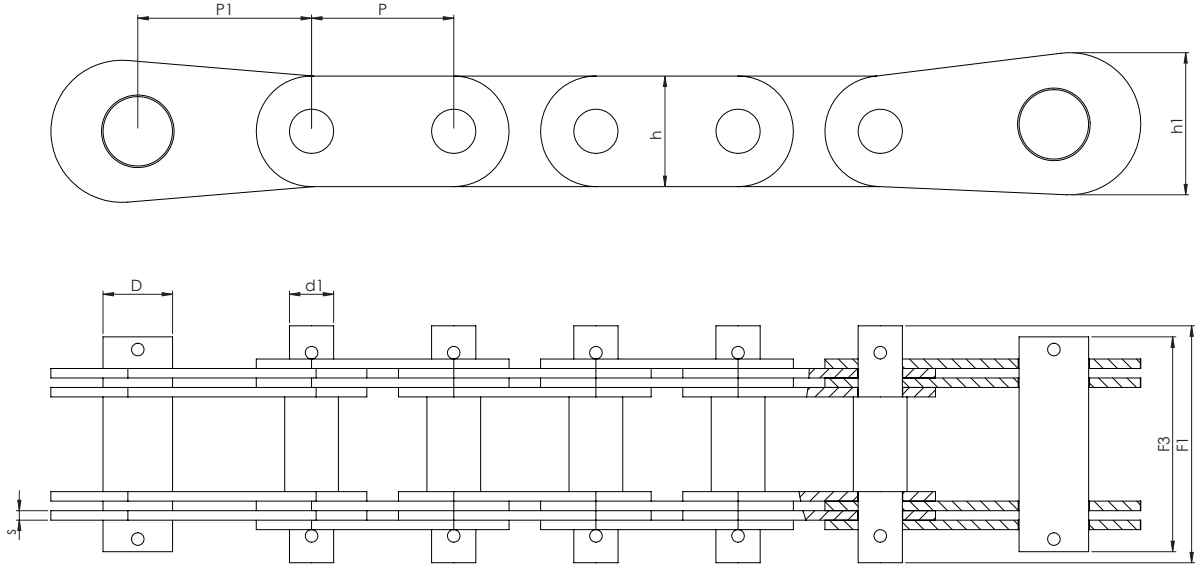
Rotary (API) Zincirleri



MAKELSAN NO.	Type	p inch	p mm	b mm min.	d mm	D mm	l mm	g mm	s mm	f _B kN	f _A kN	Q kg/m
MK.8182.6630	A	2,610	66,3	27,5	11,10	22,20	68,0	29	6,3	127	12,7	5,57
MK.8182.7620	A	3,000	76,2	38,0	14,00	-	86,5	40	8,0	240	24,0	9,80
MK.8182.7790	A	3,067	77,9	40,0	19,00	41,30	98,7	50	10,0	500	50,0	19,10
MK.8182.7810	A	3,075	78,1	38,1	17,92	31,75	93,0	45	8,0	340	34,0	12,30
MK.8182.7810A	B	3,075	78,1	38,0	17,92	31,75	87,0	45	8,0	340	34,0	11,60
MK.8182.8550	A	3,366	85,5	40,0	19,00	39,50	101,0	50	10	340	34,0	16,57
MK.8182.8890	A	3,500	88,9	38,1	23,90	44,45	118,0	60	14,0	680	68,0	27,40
MK.8182.10160	A	4,000	101,6	55,5	30,18	57,15	141,0	82	14,0	1135	113,5	41,40
MK.8182.10320	A	4,063	103,2	49,2	23,92	44,45	129,0	60	14,0	680	68,0	26,40
MK.8182.10320A	A	4,063	103,2	49,2	23,92	60,00	129,0	60	14,0	680	68,0	31,00
MK.8182.10340	A	4,073	103,4	49,5	25,40	45,20	131,0	60	14,0	771	77,1	27,20
MK.8182.103890	A	4,090	103,89	49,2	25,40	50,80	135,0	70	15,0	900	90,0	31,80
MK.8182.11430	A	4,500	114,3	49,2	29,24	57,20	130,0	76	14,0	860	86,0	35,00
MK.8182.12700	A	5,000	127,0	64,5	34,90	63,50	168,5	90	19,0	1300	130,0	59,60
MK.8182.12700A	A	5,000	127,0	70,0	39,40	63,50	174,0	90	19,0	1300	1300	60,60
MK.8182.15240	A	6,000	152,4	75,0	38,10	76,20	182,0	100	19,0	1600	160,0	70,00

Numune ya da teknik çizime göre üretim yapılır.

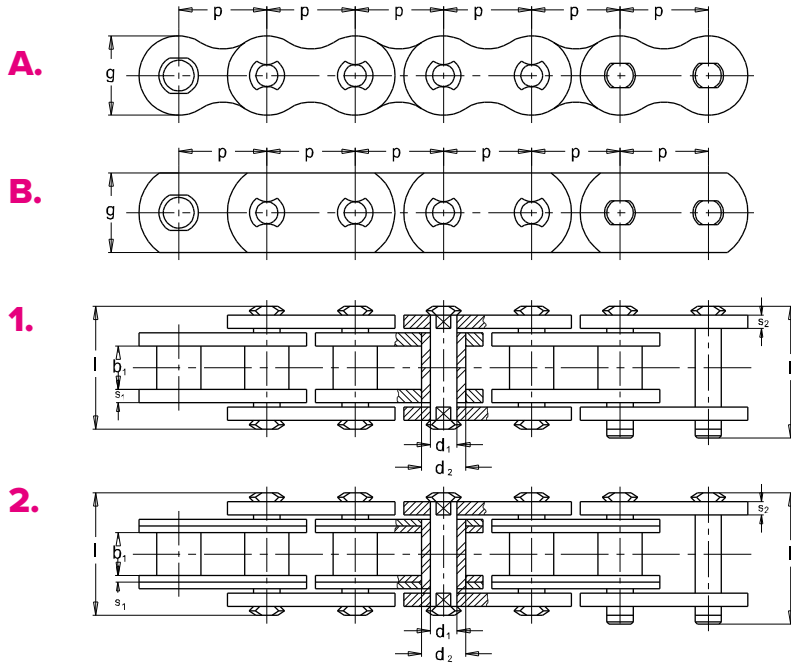
Gal Zincirler



MAKELSAN NO.	P mm	P ₁ min.	b ₁ mm	d ₂ mm	d ₁ min.	D mm	F ₃ min.	F ₁ min.	h mm	h ₁ min.	s mm	f cm ²	Q N	q kg/m
MK.8150.0015	15	20	12	5	4	9	25	27	12	18	2	0.16	5000	0.7
MK.8150.0020	20	25	15	8	6	10	28	33	15	20	2	0.24	125000	1.1
MK.8150.0025	25	30	18	10	8	12	36	42	18	25	3	0.48	250000	2.8
MK.8150.0030	30	40	20	11	9	14	51	58	20	30	3	1.08	40000	3.4
MK.8150.0035	35	45	22	12	10	16	53	61	26	35	3	1.20	60000	4.5
MK.8150.0040	40	50	25	14	12	18	58	66	30	40	3	1.44	80000	4.7
MK.8150.0045	45	55	30	17	14	22	63	70	35	45	3	1.68	100000	7.0
MK.8150.0050	50	60	35	22	18	26	90	97	38	50	4.5	3.24	150000	11.0
MK.8150.0050	55	65	40	24	21	32	108	115	40	55	6	5.04	200000	16.0
MK.8150.0055	60	70	45	26	23	36	114	120	45	60	6	5.52	250000	18.0
MK.8150.0060	70	85	50	32	28	40	148	157	55	70	6	10.08	375000	34.0
MK.8150.0070	80	100	60	36	32	50	159	171	60	85	6	11.52	500000	39.0
MK.8150.0080	90	120	70	40	36	60	184	200	70	100	7	15.12	750000	53.0
MK.8150.0090	100	140	80	45	40	70	224	234	80	120	7	22.95	1000000	77.0
MK.8150.0100	110	160	90	50	45	80	236	251	90	140	7	25.28	1250000	90.0
MK.8150.0120	120	180	100	55	50	90	262	277	100	160	8	32.00	1500000	112.0

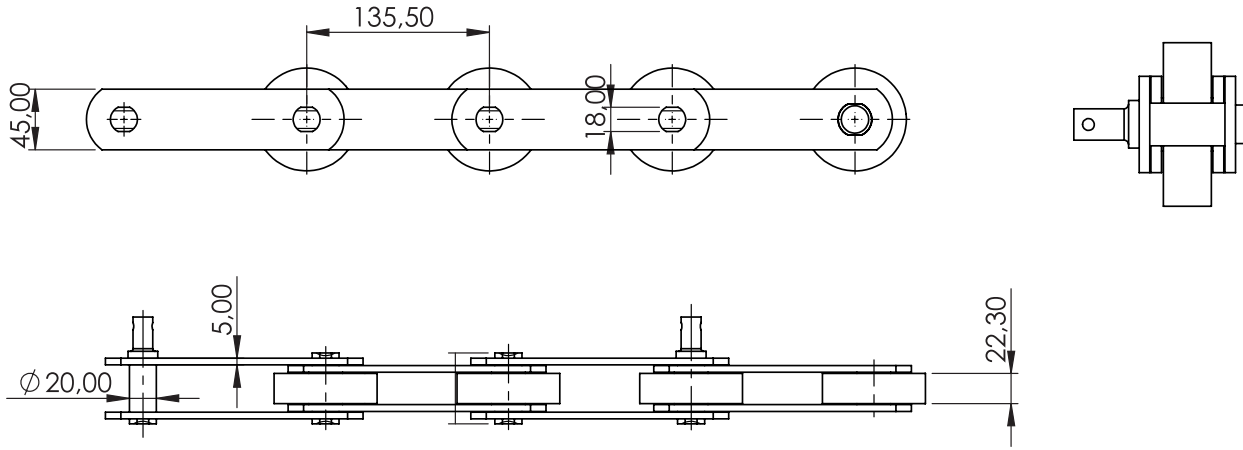
Numune ya da teknik çizime göre üretim yapılır.

Burç Zincirleri



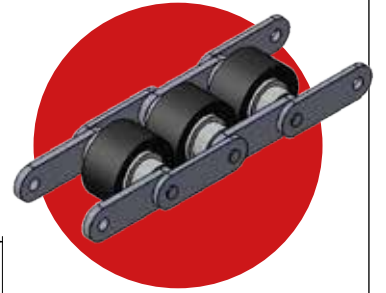
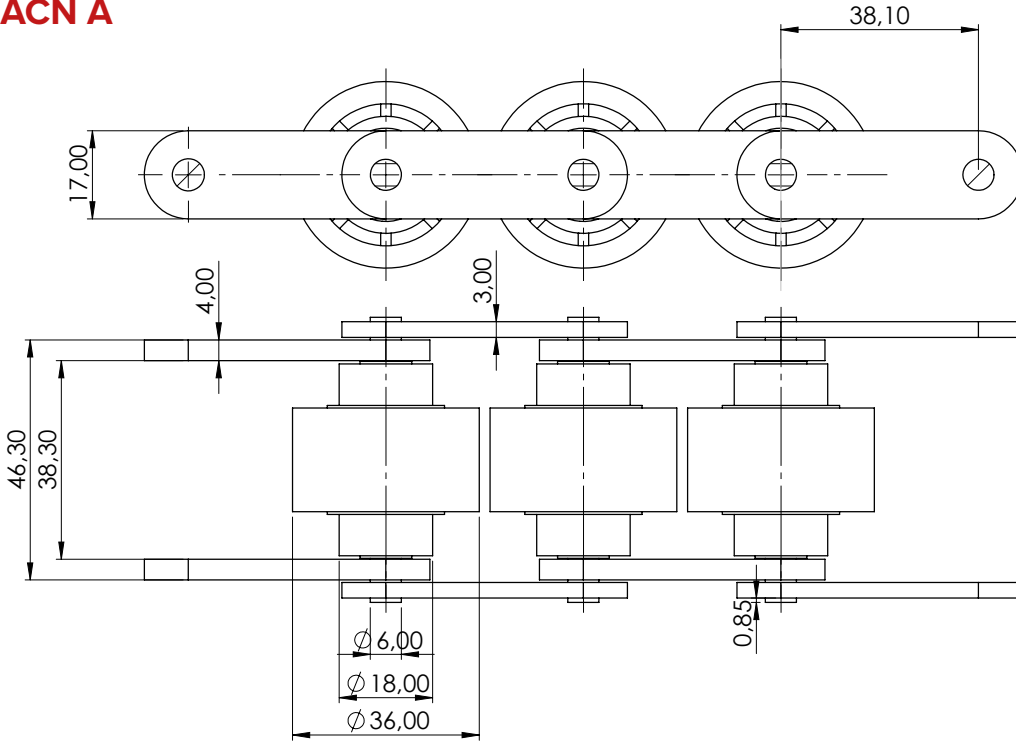
MAKELSAN NO.	Type	p mm	b_1 mm min.	d_1 mm	d_2 mm	l_1 mm	l_2 mm	g mm	s_1 mm	s_2 mm	f mm ²	F_B kN min.	F_A kN	Q kg/m
MK.8164.2000	A1	20	16	8	12	34	38	19	3	3	170	25,0	3,57	2,15
MK.8164.2500	A1	25	18	10	15	36	40	24	3	3	230	31,5	4,50	2,55
MK.8164.3000	A1	30	20	11	17	43	49	28	4	4	300	40,0	5,71	4,00
MK.8164.3500	A1	35	22	12	18	46	51	30	4	4	350	50,0	7,14	4,30
MK.8164.4000	A1	40	25	14	20	53	58	35	5	5	480	63,0	9,00	5,50
MK.8164.4500	A1	45	30	16	22	63	67	38	6	6	700	80,0	11,42	7,55
MK.8164.4510	A1	45	30	16	23	63	67	38	6	6	700	80,0	11,42	7,65
MK.8164.5000	A2	50	35	18	26	68	74	40	3	6	840	100,0	14,28	7,80
MK.8164.5500	A2	55	45	20	30	86	93	43	4	8	1210	125,0	17,85	10,36
MK.8164.5510	A2	55	45	20	28	86	93	43	4	8	1210	125,0	17,85	10,08
MK.8164.6000	A2	60	50	22	32	92	99	48	4	8	1680	160,0	22,85	15,20
MK.8164.6500	A1	65	55	26	36	98	106	60	8	8	2100	200,0	28,57	18,60
MK.8164.7000	B2	70	60	30	42	111	119	64	5	10	2720	250,0	35,71	27,20
MK.8164.7010	B2	70	60	30	40	111	119	64	5	10	2720	250,0	35,71	26,90
MK.8164.8000	B2	80	70	32	44	129	137	75	6	12	3600	315,0	45,00	36,40
MK.8164.9000	B2	90	80	36	50	139	147	85	6	12	4000	400,0	57,14	44,20
MK.8164.9010	B2	90	80	36	48	139	147	85	6	12	4000	400,0	57,14	43,80
MK.8164.1000	B1	100	90	42	56	149	159	95	12	12	4580	500,0	71,42	50,50
MK.8164.1001	B1	100	90	42	52	149	159	95	12	12	4580	500,0	71,42	49,83

Yürüyen Merdiven Zincirleri



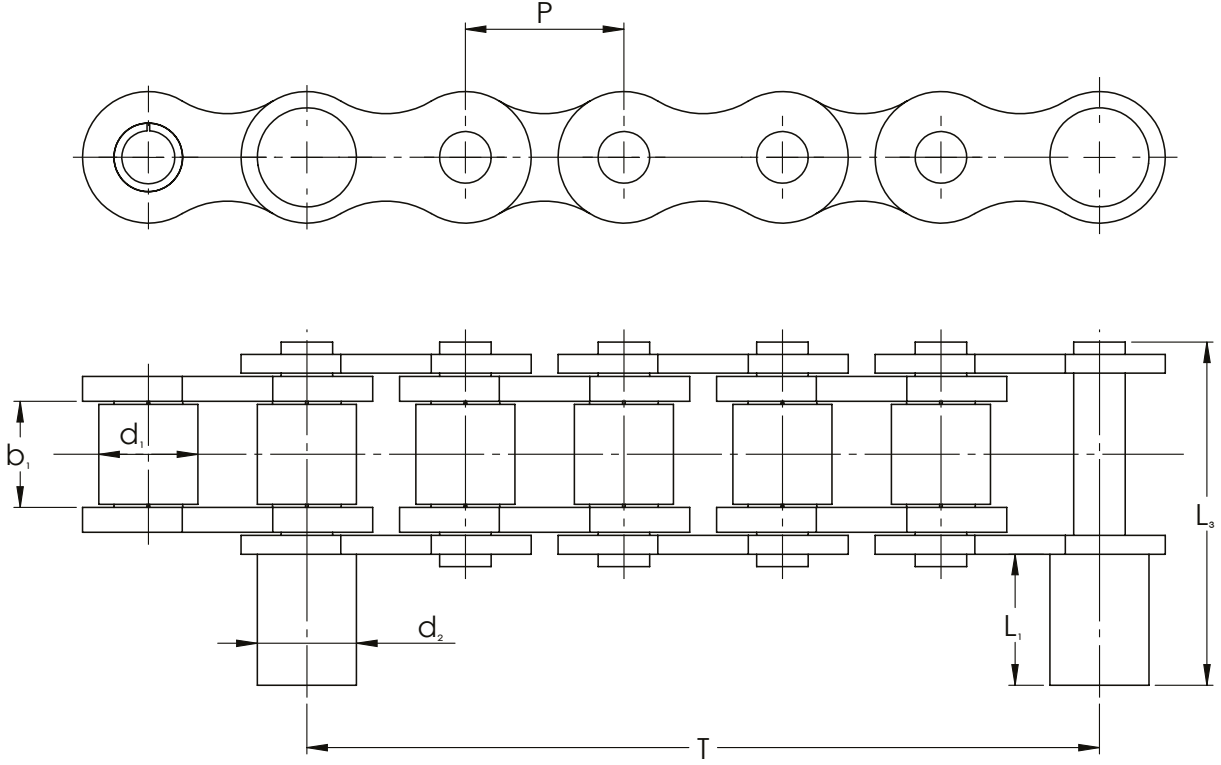
Akümülayon Zincirleri

ACN A



Pim Çıkıntılı Makaralı Zincirler

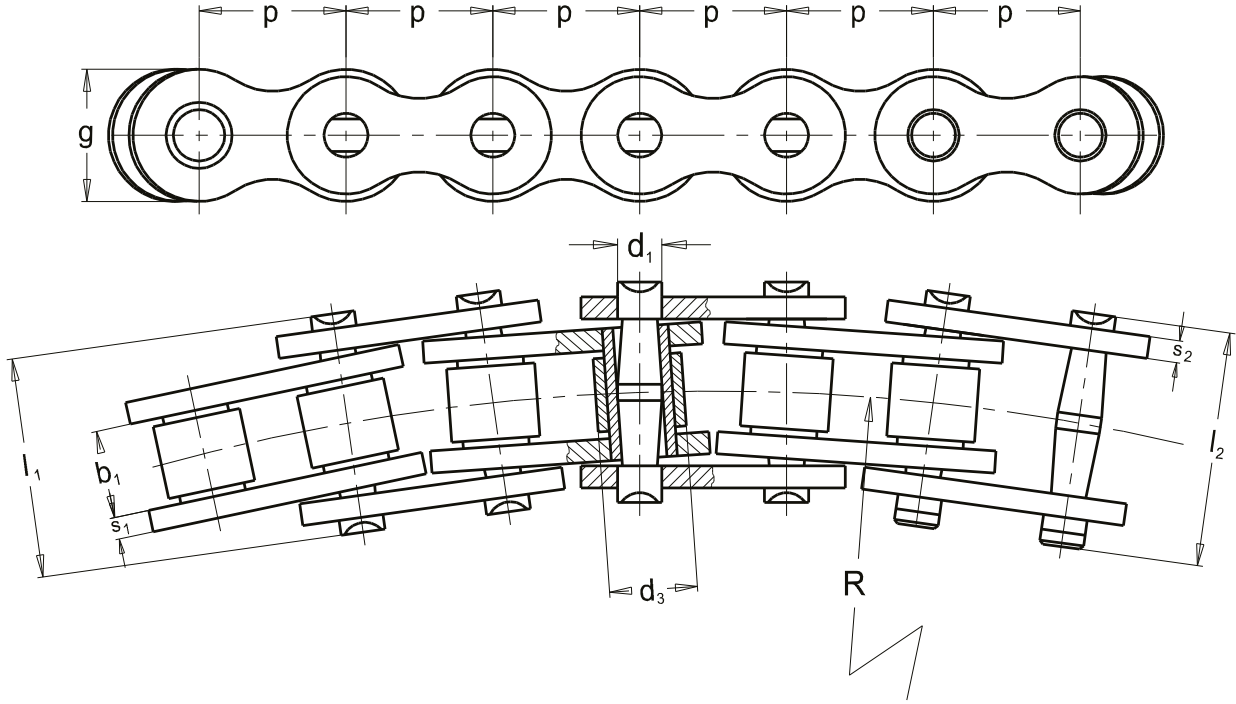
Çıkıntılı pimler belirtilen talebe göre yerleştirilebilir.



MAKELSAN NO.	P mm	b ₁ mm	d ₁ mm	d ₂ mm	L ₁ mm	L ₃ mm
MK.08EP.1270	12.7	7.75	4.45	8.51	11.0	15
MK.10EP.1587	15.875	9.65	5.08	10.36	13.2	16
MK.12EP.1905	19.05	11.68	5.72	12.07	16.1	19
MK.16EP.2540	25.4	17.02	8.27	15.88	21.0	18
MK.20EP.3175	31.75	19.56	8.27	15.88	21.0	18

Yana Yaylanan Zincirler

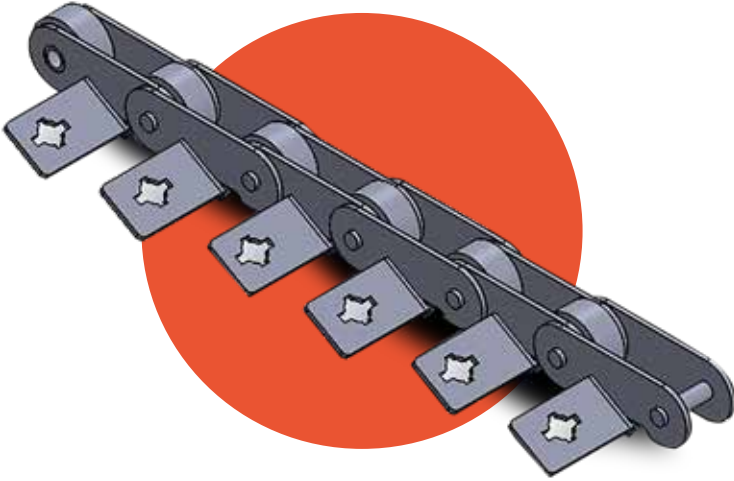
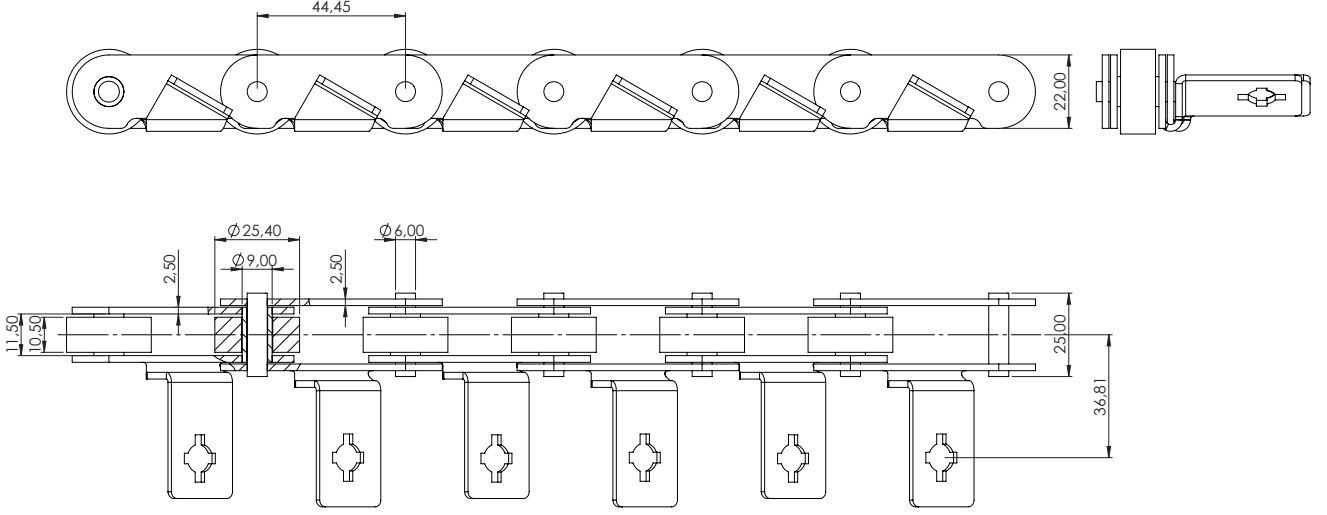
“R” ile belirtilen yaylanma açısı zincir hatvesi ve zincir ölçülerine göre ayarlanır.



MAKELSAN NO.	P mm	b ₁ mm min.	d ₁ mm h9	d ₃ mm h10	l ₁ mm	l ₂ mm	g mm	s ₁ mm	s ₂ mm	R mm	F _B kN min.	F _A kN	Q kg/m
MK2.8187.0952	12,700	7,95	3,96	7,92	16,9	18,9	11,7	1,5	1,5	350	14,9	1,77	0,63
MK2.8187.0127	15,875	9,53	5,08	10,16	21,1	23,1	14,6	2,0	2,0	400	22,1	3,14	1,03
MK2.8187.1587	19,050	12,70	5,95	11,91	26,3	28,1	17,5	2,4	2,4	500	29,4	4,22	1,46
MK2.8187.1905	25,400	15,88	7,93	15,88	33,4	36,4	23,4	3,2	3,2	600	57,9	7,65	2,42

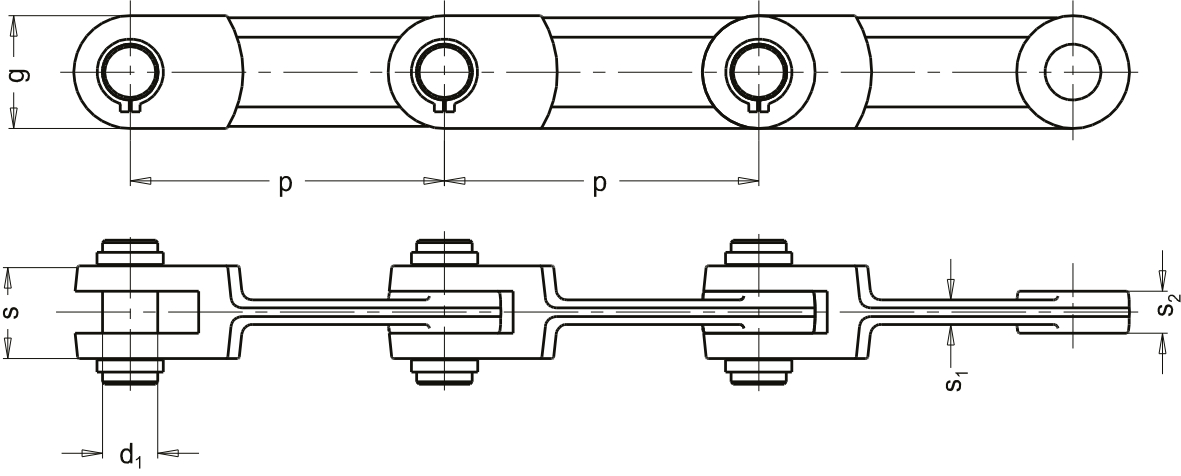
Numune ya da teknik çizime göre üretim yapılır.

Makarna Zinciri



Numune ya da teknik çizime göre üretim yapılır.

Dövme Zincirler

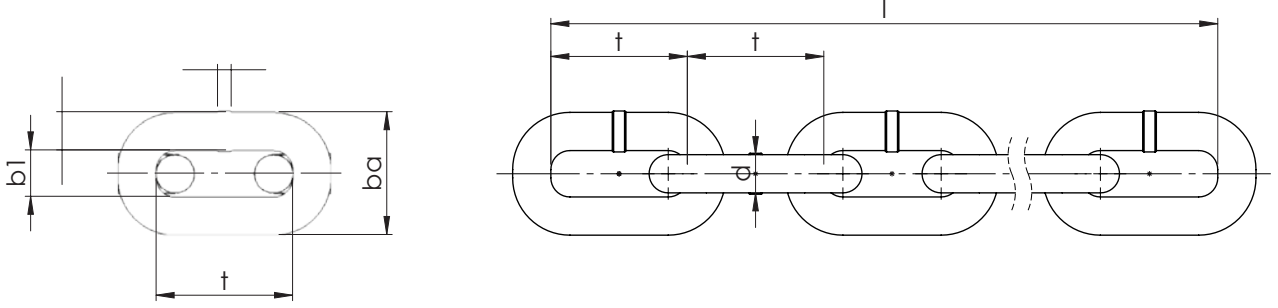


MAKELSAN NO.	Type	P mm	d ₁ mm	s mm	s ₁ mm	s ₂ mm	g mm	F _B kN min	F _A kN	Q kg/m
R100102	101,6 M	101,6	14	30	8	12	36	147	21,0	5,25
R100104	142 M	142,0	25	42	13	19	50	265	37,8	10,40
R100107	150 M	150,0	25	42	13	15	47	265	37,8	10,00
R100108	160 M	160,0	25	50	12	23	50	333	47,5	10,50
R100109	200 M	200,0	28	66	18	33	60	539	77,0	16,30
R100110	250 M	250,0	34	70	20	31	75	735	105,0	20,85
R100111	260 M	260,0	34	70	20	31	75	735	105,0	21,65

Numune ya da teknik çizime göre üretim yapılır.

Yüksek Muhavemetli Maden Zincirleri

DIN 22252

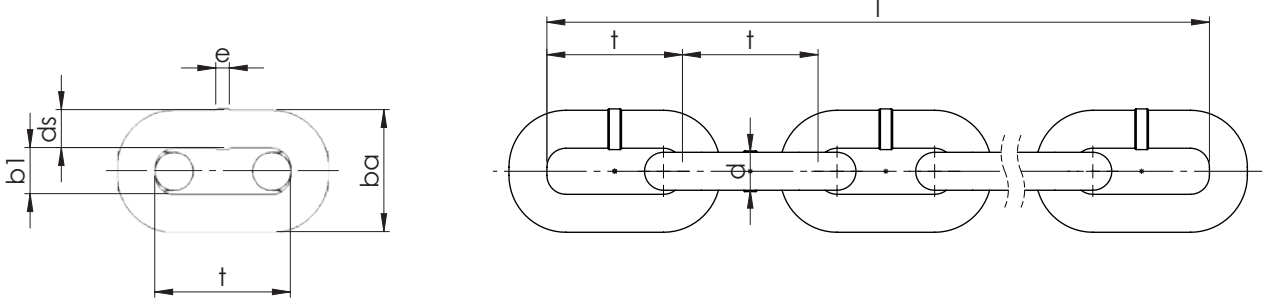


MAKELSAN NO.	Nominal Diameter and Tolerance	Pod Length Inner and Tolerance	Inner Width (Min)	Outside Width (Max)	Test Load	Elongation Under Test Load	Breaking Load	Quality	Weight
	d mm	t mm	b ₁ mm	ba mm	kN	Max. %	kN		Kg/m
MKS-LC14	14 ±0,4	50±0,5	17	48	150 185	1,4 1,6	190 246	1 2	4
MKS-LC18	18 ±0,5	64±0,6	21	60	260 305	1,4 1,6	320 407	1 2	6,6
MKS-LC19	19 ±0,5	64,5 ±0,6	22	63	283 340	1,4 1,6	357 454	1 2	7,6
MKS-LC22	22 ±0,7	86±0,9	26	73	380 490	1,6	480 610	1 2	9,5
MKS-LC24	24±0,7	86±0,9	28	79	460 580	1,6	570 720	1 2	11,6
MKS-LC24R	24±0,7	87,5 ±0,9	28	79	460 580	1,6	570 720	1 2	11,5
MKS-LC26	26±0,8	92±0,9	30	85	540 680	1,6	670 850	1 2	13,7
MKS-LC30	30±0,9	108±1,1	34	97	710 900	1,6	890 1130	1 2	18
MKS-LC34	34±1,0	126±1,3	38	109	1090	1,6	1450	2	22,7
MKS-LC38	38±1,1	137±1,4	42	121	1360	1,6	1820	2	29
MKS-LC42	42±1,1	146±1,5	48	137	1660	1,6	2220	2	36,5

Numune ya da teknik çizime göre üretim yapılır.

Yüksek Muhavemetli Maden Zincirleri

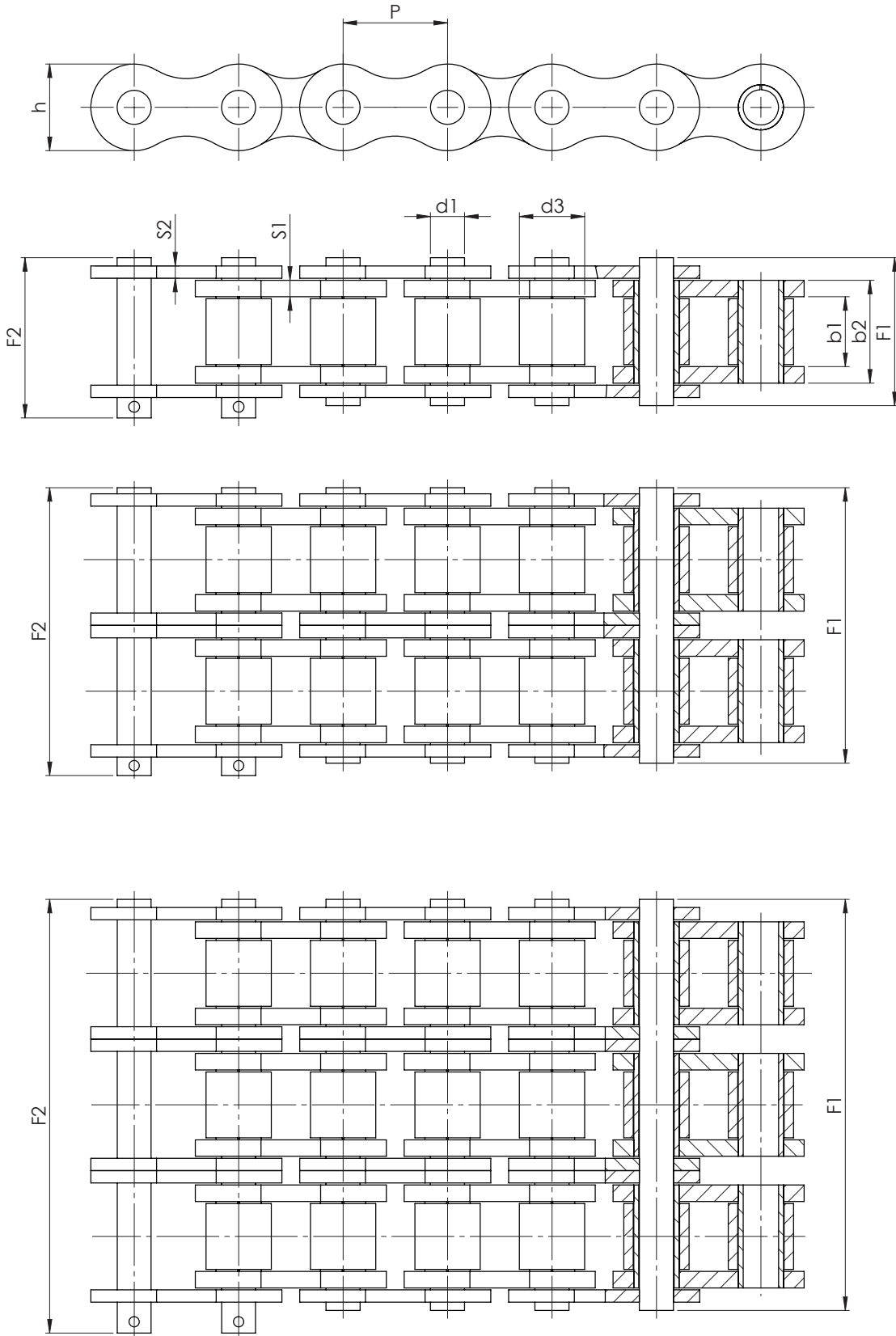
DIN 22252 (Grade 100)



MAKELSAN NO.	Nominal Diameter and Tolerance	Pod Length Inner and Tolerance	Inner Width (Min)	Outside Width (Max)	Test Load	Elongation Under Test Load	Breaking Load	Quality	Weight
	Wd mm	t mm	bi mm	ba mm	kN	Max. %	kN		Kg/m
MKS-LC14G	14 ±0,4	50±0,5	17	48	250	1,9	310	Grade 10	4
MKS-LC18G	18 ±0,5	64±0,6	21	60	410	1,9	510	Grade 10	6,6
MKS-LC22G	22 ±0,7	86±0,9	26	73	610	1,9	760	Grade 10	9,5
MKS-LC24G	24±0,7	86±0,9	28	79	720	1,9	900	Grade 10	11,6
MKS-LC24GR	24±0,7	87,5 ±0,9	28	79	720	1,9	900	Grade 10	11,5
MKS-LC26G	26±0,8	92±0,9	30	85	850	1,9	1060	Grade 10	13,7
MKS-LC30G	30±0,9	108±1,1	34	97	1130	1,9	1410	Grade 10	18
MKS-LC34G	34±1,0	126±1,3	38	109	1450	1,9	1820	Grade 10	22,7
MKS-LC38G	38±1,1	137±1,4	42	121	1820	1,9	2270	Grade 10	29

Numune ya da teknik çizime göre üretim yapılır.

Standart Makaralı Zincirler (8188)



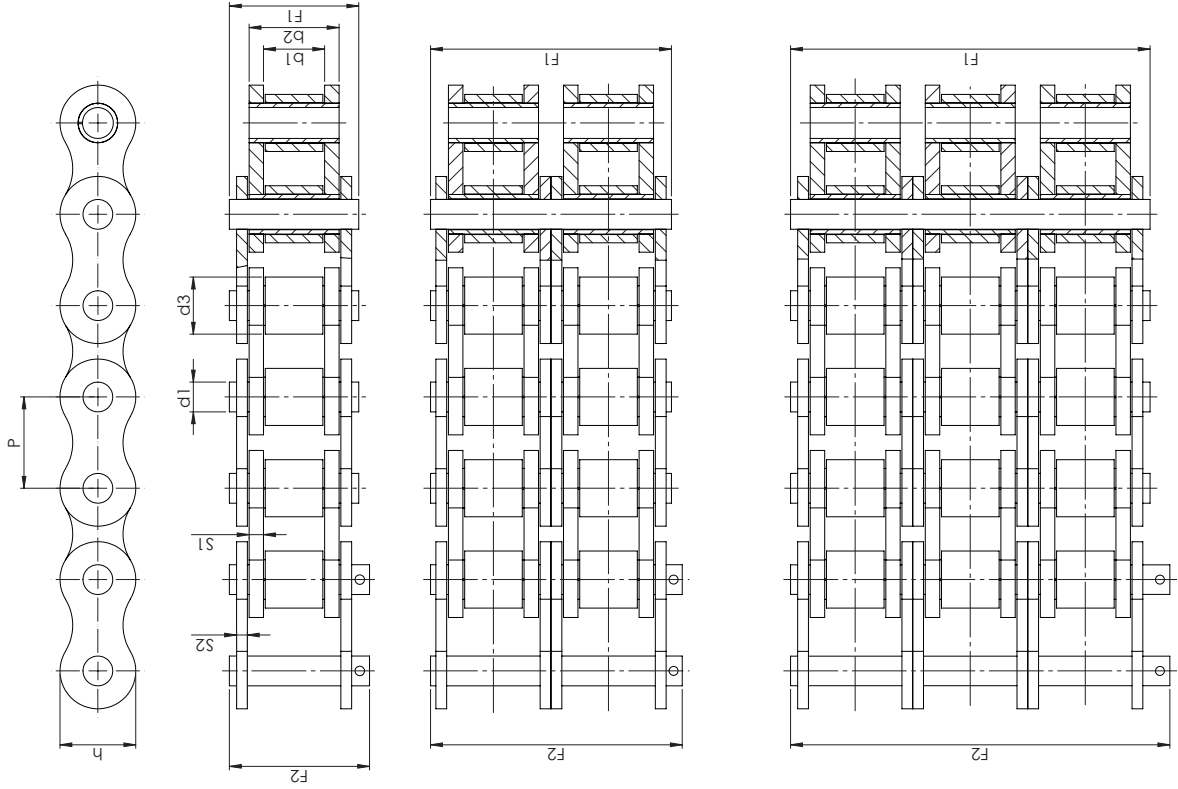
MAKELSAN NO.	ISO Nr	P mm	b ₁ mm	d ₁ mm	d ₃ mm	F ₁ mm	F ₂ mm	h mm	S ₁ /S ₂ mm	f cm ²	Q kN	q kg/m
MK1.8188.1270	08A1	12.70	7.95	3.96	7.92	17.80	21.70	12.07	1.60	0.44	14.1	0.60
MK1.8188.1587	10A-1	15.875	9.53	5.08	10.16	21.80	25.90	15.09	2.00	0.70	22.2	1.01
MK1.8188.1905	12A-1	19.05	12.70	5.94	11.91	26.90	31.50	18.08	2.40	1.06	31.8	1.47
MK1.8188.1588	16A-1	25.40	15.88	7.92	15.88	33.50	38.90	24.13	3.20	1.79	56.7	2.57
MK1.8188.3175	20A-1	31.75	19.05	9.53	19.05	41.10	47.20	30.18	4.20	2.62	88.5	3.73
MK1.8188.3810	24A-1	38.10	25.40	11.10	22.23	50.80	57.40	36.20	5.00	3.94	127.0	5.50
MK1.8188.4445	28A-1	44.45	25.40	12.70	25.40	54.90	62.30	42.24	5.50	4.72	172.4	7.50
MK1.8188.5080	32A-1	50.80	31.75	14.27	28.58	65.50	73.40	48.26	6.30	6.50	226.8	9.70
MK1.8188.6350	40A-1	63.50	38.10	19.84	39.68	80.30	90.50	60.33	8.00	10.90	353.8	15.80
MK1.8188.7620	48A-1	76.20	47.63	23.80	47.63	95.50	106.00	72.39	10.00	16.10	510.3	22.60

MAKELSAN NO.	ISO Nr	P mm	b ₁ mm	d ₁ mm	d ₃ mm	F ₁ mm	F ₂ mm	h mm	S ₁ /S ₂ mm	f cm ²	Q kN	q kg/m
MK1.8188.1270	08A-2	12.70	7.95	3.96	7.92	32.30	36.20	12.07	1.60	0.88	28.2	0.60
MK1.8188.1587	10A-2	15.875	9.53	5.08	10.16	39.90	44.00	15.09	2.00	0.40	44.4	1.01
MK1.8188.1905	12A-2	19.05	12.70	5.94	11.91	49.80	54.40	18.08	2.40	2.12	63.6	1.47
MK1.8188.2540	16A-2	25.40	15.88	7.92	15.88	62.70	68.10	24.13	3.20	3.58	113.4	2.57
MK1.8188.3175	20A-2	31.75	19.05	9.53	19.05	77.00	83.10	30.18	4.20	5.24	177.0	3.73
MK1.8188.3810	24A-2	38.10	25.40	11.10	22.23	96.30	102.90	36.20	5.00	7.88	254.0	5.50
MK1.8188.4445	28A-2	44.45	25.40	12.70	25.40	103.60	111.00	42.24	5.50	9.44	344.8	7.50
MK1.8188.5080	32A-2	50.80	31.75	14.27	28.58	124.20	132.10	48.26	6.30	13.00	453.6	9.70
MK1.8188.6350	40A-2	63.50	38.10	19.84	39.68	151.90	162.10	60.33	8.00	21.80	707.6	15.80
MK1.8188.7620	48A-2	76.20	47.63	23.80	47.63	183.40	193.90	72.39	10.00	32.20	1020.6	22.60

MAKELSAN NO.	ISO Nr	P mm	b ₁ mm	d ₁ mm	d ₃ mm	F ₁ mm	F ₂ mm	h mm	S ₁ /S ₂ mm	f cm ²	Q kN	q kg/m
MK1.8188.1270	08A-3	12.70	7.95	3.96	7.92	46.70	50.60	12.07	1.60	1.32	42.3	1.78
MK1.8188.1587	10A-3	15.875	9.53	5.08	10.16	57.90	62.00	15.09	2.00	2.10	66.6	2.89
MK1.8188.1905	12A-3	19.05	12.70	5.94	11.91	72.60	77.20	18.08	2.40	3.18	95.4	4.28
MK1.8188.2540	16A-3	25.40	15.88	7.92	15.88	91.70	97.10	24.13	3.20	5.37	170.1	7.47
MK1.8188.3175	20A-3	31.75	19.05	9.53	19.05	113.00	119.10	30.18	4.20	7.86	265.5	11.01
MK1.8188.3810	24A-3	38.10	25.40	11.10	22.23	141.70	148.30	36.20	5.00	11.82	381.0	16.50
MK1.8188.4445	28A-3	44.45	25.40	12.70	25.40	152.40	159.80	42.24	5.50	14.16	517.2	21.70
MK1.8188.3175	32A-3	50.80	31.75	14.27	28.58	182.90	190.80	48.26	6.30	19.50	680.4	28.30
MK1.8188.6350	40A-3	63.50	38.10	19.84	39.68	225.50	233.70	60.33	8.00	32.70	1061.4	48.00
MK1.8188.7620	48A-3	76.20	47.63	23.80	47.63	271.30	281.80	72.39	10.00	48.30	1530.9	66.00

Numune ya da teknik çizime göre üretim yapılır.

Standart Makaralı Zincirler (8187)



MAKELSAN NO.	ISO Nr	P mm	b ₁ mm	d ₁ mm	d ₃ mm	F ₁ mm	F ₂ mm	h mm	S ₁ /S ₂ mm	f cm ²	Q kN	q kg/m
MK1.8187.0952	06B-1	9.52	5.72	.28	6.35	13.50	16.8	8.26	1.30/1.30	0.28	5.0	0.41
MK1.8187.0081	081-1	12.70	3.30	3.66	7.75	10.20	11.7	9.91	1.00/1.00	0.21	9.0	0.28
MK1.8187.0084	084-1	12.70	4.88	4.09	7.75	14.80	16.3	11.15	1.95/1.60	0.35	9.0	0.59
MK1.8187.0127	08B-1	12.70	7.75	4.45	8.51	17.00	20.90	11.81	1.60/1.60	0.50	18.0	0.70
MK1.8187.1587	10B-1	15.87	9.65	5.08	10.16	19.60	23.7	14.73	1.60/1.60	0.67	22.4	0.95
MK1.8187.1905	12B-1	19.05	11.68	5.72	12.07	22.70	27.3	16.13	1.80/1.80	0.89	29.0	1.25
MK1.8187.0254	16B-1	25.40	17.02	8.28	15.88	36.10	41.5	21.08	4.00/3.10	2.10	60.0	2.70
MK1.8187.3175	20B-1	31.75	19.56	10.19	19.05	43.20	49.3	26.42	4.50/3.50	2.95	95.0	3.60
MK1.8187.0381	24B-1	38.10	25.40	14.63	25.40	53.40	60.0	33.40	5.50/5.00	5.54	160.0	6.70
MK1.8187.4445	28B-1	44.45	30.99	15.90	27.94	65.10	72.5	37.08	7.50/6.50	7.40	200.0	8.30
MK1.8187.0508	32B-1	50.80	30.99	17.81	29.21	67.40	75.3	42.29	7.00/6.00	8.11	250.0	10.5
MK1.8187.0635	40B-1	63.50	38.10	22.89	39.37	82.60	92.8	51.96	8.50/8.00	12.76	355.0	16.0
MK1.8187.0762	48B-1	76.20	45.72	29.24	48.26	99.10	109.6	63.88	12.00/10.00	20.63	560.0	25.0
MK1.8187.0889	56B-1	88.90	53.34	34.32	53.98	114.60	126.3	77.85	13.00/12.00	27.91	850.0	35.0
MK1.8187.1016	64B-1	101.60	60.96	39.40	130.90	143.90	143.9	90.17	14.00/13.00	36.25	112.0	60.0
MK1.8187.1143	72B-1	114.30	68.58	44.48	72.39	147.40	161.7	103.6:J	17.00/15.00	46.17	1400.0	80.0

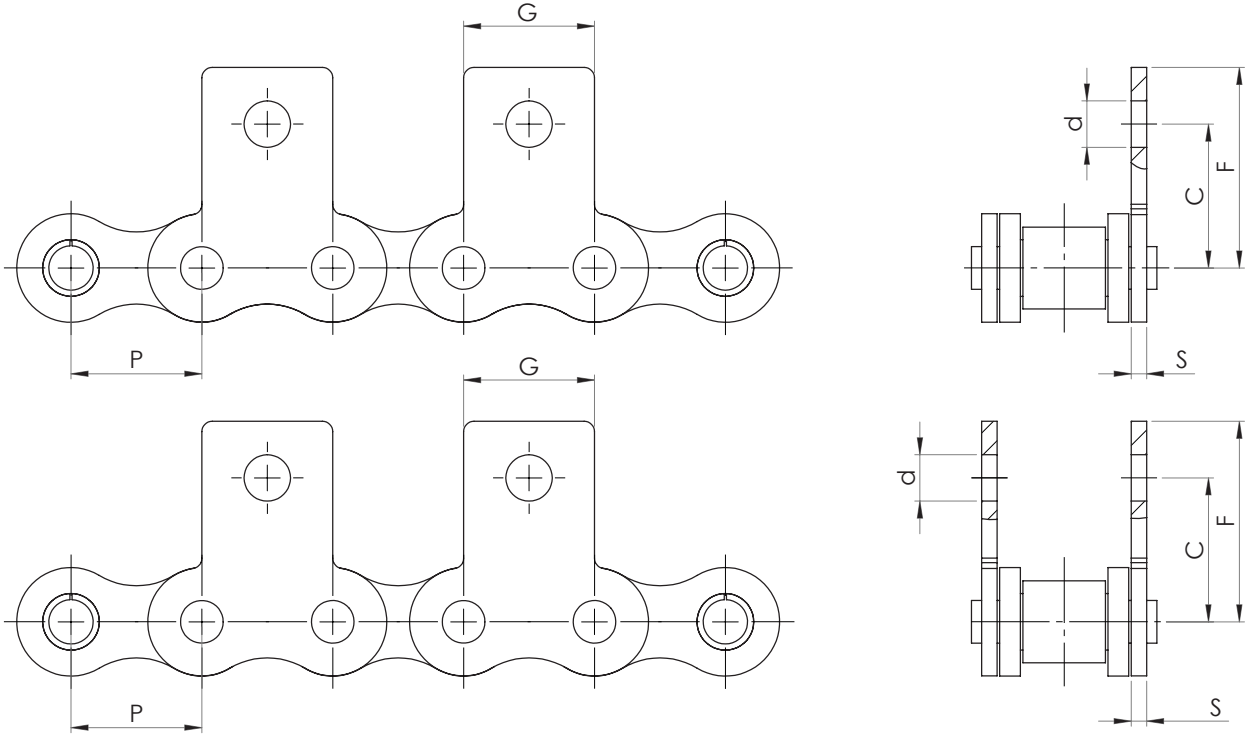
Numune ya da teknik çizime göre üretim yapılır.

MAKELSAN NO.	ISO Nr	P mm	b ₁ mm	d ₁ mm	d ₃ mm	F ₁ mm	F ₂ mm	h mm	S ₁ /S ₂ mm	f cm ²	Q kN	q kg/m
MK2.8187.0952	06B-2	9.52	5.72	3.28	6.35	23.8	27.1	8.26	1.30/1.30	10.24	16.4	0.78
MK2.8187.0127	08B-2	12.70	7.75	4.45	8.51	31.0	34.9	11.81	1.60/1.60	13.92	32.0	1.35
MK2.8187.1587	10B-2	15.87	9.65	5.08	10.16	36.2	40.3	14.73	1.60/1.60	16.59	44.5	1.85
MK2.8187.1905	12B-2	19.05	11.68	5.72	12.07	42.2	46.8	16.13	1.80/1.80	19.46	57.8	2.50
MK2.8187.0254	16B-2	25.40	17.02	8.28	15.88	68.0	73.4	21.08	4.00/3.10	31.88	106.0	5.40
MK2.8187.3175	20B-2	31.75	19.56	10.19	19.05	79.7	85.8	26.42	4.50/3.50	36.45	170.0	7.20
MK2.8187.0381	24B-2	25.40	25.40	14.63	101.8	108.	108.4	33.40	5.50/5.00	48.36	280.0	13.50
MK2.8187.4445	28B-2	44.45	30.99	15.90	27.94	124.7	32.1	37.08	7.50/6.50	59.56	360.0	16.60
MK2.8187.0508	32B-2	50.80	30.99	17.81	29.21	126.0	133.9	42.29	7.00/6.00	58.55	450.0	21.00
MK2.8187.0635	40B-2	63.50	38.10	22.89	39.37	154.9	165.1	51.96	8.50/8.00	72.29	630.0	32.00
MK2.8187.0762	48B-2	76.20	45.72	29.24	48.26	190.4	200.9	63.88	12.00/10.00	91.50	1000.0	50.00
MK2.8187.0889	56B-2	88.90	53.34	34.32	53.98	221.2	232.9	77.85	13.00/12.00	106.6	1600.0	70.00
MK2.8187.1016	64B-2	101.60	60.96	39.40	250.8	263	263.8	90.17	14.00/13.00	119.89	2000.0	120.00
MK2.8187.1143	72B-2	114.30	68.58	44.48	283.5	298	298.0	103.63	17.00/15.00	136.27	2500.00	160.00

MAKELSAN NO.	ISO Nr	P mm	b ₁ mm	d ₁ mm	d ₃ mm	F ₁ mm	F ₂ mm	h mm	S ₁ /S ₂ mm	f cm ²	Q kN	q kg/m
MK3.8187.0952	06B-3	9.52	5.72	3.28	6.35	34.00	37.3	8.26	1.30/1.30	5.64	24.9	1.2
MK3.8187.0127	08B-3	12.70	7.75	4.45	8.51	44.9	48.8	11.01	1.60/1.60	10.24	47.5	2.0
MK3.8187.1587	10B-3	15.87	9.65	5.08	10.16	52.8	56.9	14.73	1.60/1.60	13.92	66.7	2.8
MK3.8187.1905	12B-3	19.05	11.68	5.72	12.07	61.7	66.3	16.13	1.80/1.80	16.59	88.7	3.8
MK3.8187.0254	16B-3	25.40	17.02	8.28	15.88	99.9	105.3	21.08	4.00/3.10	19.46	160.0	8.0
MK3.8187.3175	20B-3	31.75	19.56	10.19	19.05	116.1	122.2	26.42	4.50/3.50	31.88	250.0	11.0
MK3.8187.0381	24B-3	25.40	25.40	14.63	101.8	150.2	156.8	33.40	5.50/5.00	36.45	425.0	21.0
MK3.8187.4445	28B-3	44.45	30.99	15.90	27.94	184.3	191.7	37.08	7.50/6.50	48.36	53.0	25.0
MK3.8187.0508	32B-3	50.80	30.99	17.81	29.21	184.5	192.4	42.29	7.00/6.00	59.56	670.0	32.0
MK3.8187.0635	40B-3	63.50	38.10	22.89	39.37	227.2	237.4	51.96	8.50/8.00	58.55	950.0	48.0
MK3.8187.0762	48B-3	76.20	45.72	29.24	48.26	281.6	292.1	63.88	12.00/10.00	72.29	1500.0	75.0
MK3.8187.0889	56B-3	88.90	53.34	34.32	53.98	339.0	341.7	77.85	13.00/12.00	91.21	2240.0	105.0
MK3.8187.1016	64B-3	101.60	60.96	39.40	250.8	370.7	383.7	90.17	14.00/13.00	160.6	3000.0	180.0
MK3.8187.1143	72B-3	114.30	68.58	44.48	72.39	420.0	434.3	103.63	17.00/15.00	119.89	3750.0	240.0

Numune ya da teknik çizime göre üretim yapılır.

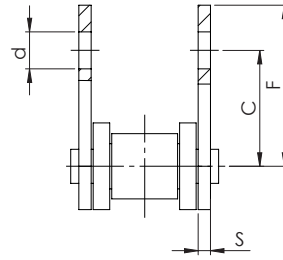
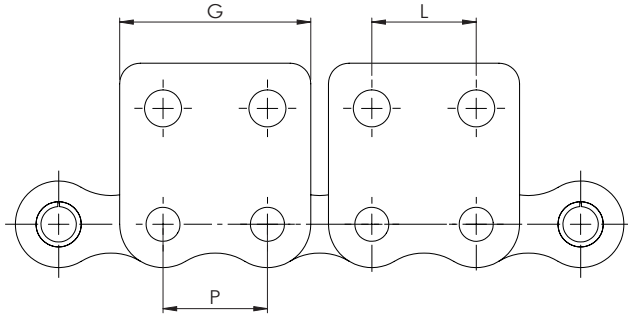
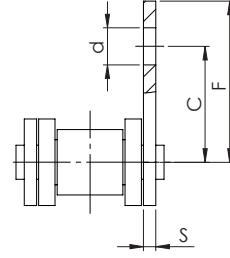
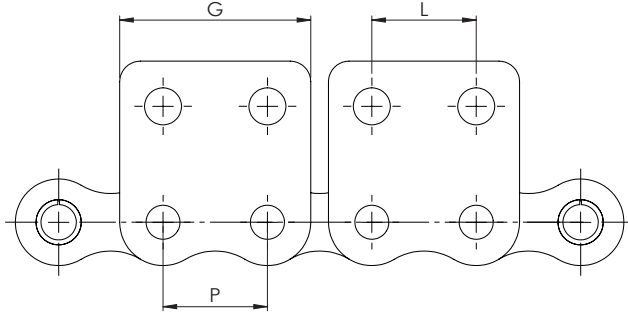
Düz Form Ataşmanlar - K1



MAKELSAN NO.	P mm	G mm	C mm	F mm	S mm	d ₄ mm
MK.008BK1	12.70	9.5	14.7	20.3	1.6	4.5
MK.010BK1	15.875	15.0	17.2	26.7	1.7	5.5
MK.012BK1	19.05	18.5	18.7	29.0	1.8	6.6
MK.016BK1	25.40	25.0	28.6	41.5	3.0	9.0
MK.020BK1	31.75	35.0	30.5	45.7	4.0	9.0
MK.024BK1	38.10	38.0	41.0	60.0	5.0	11
MK.028BK1	44.45	45.0	52.5	75.5	6.0	14
MK.032BK1	50.80	50.0	53.5	77.0	6.0	14

Numune ya da teknik çizime göre üretim yapılır.

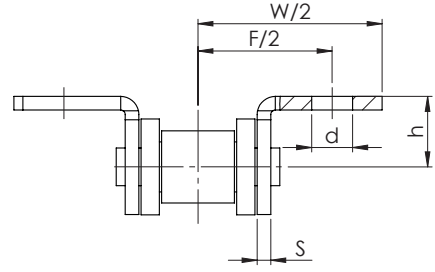
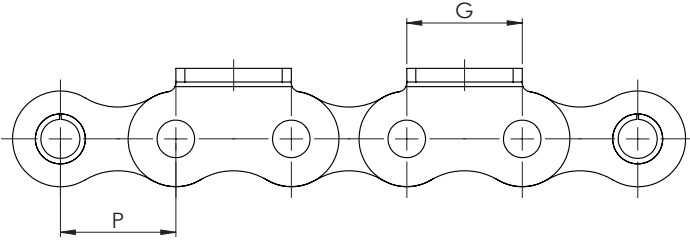
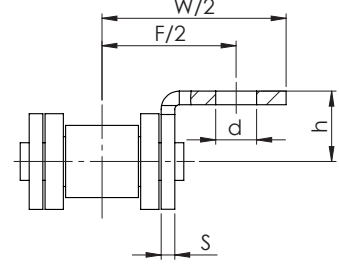
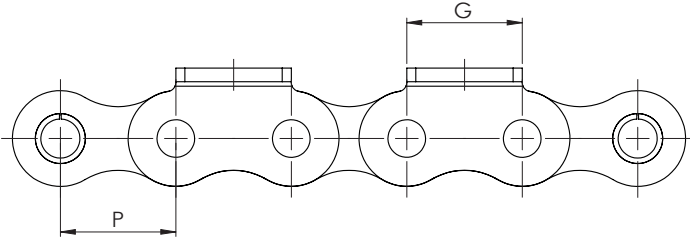
Düz Form Ataşmanlar - K2



MAKELSAN NO.	P mm	G mm	F mm	W mm	S mm	d ₄ mm
MK.008BK2	12.70	9.5	26.2	20.3	1.6	4.5
MK.010BK2	15.875	15.0	33.4	26.7	1.7	5.5
MK.012BK2	19.05	18.5	37.2	29.0	1.8	6.6
MK.016BK2	25.40	25.0	57.8	41.5	3.0	9.0
MK.020BK2	31.75	35.0	66.8	45.7	4.0	9.0
MK.024BK2	38.10	38.0	88.0	60.0	5.0	11
MK.028BK2	44.45	45.0	108.0	75.5	6.0	14
MK.032BK2	50.80	50.0	108.0	77.0	6.0	14

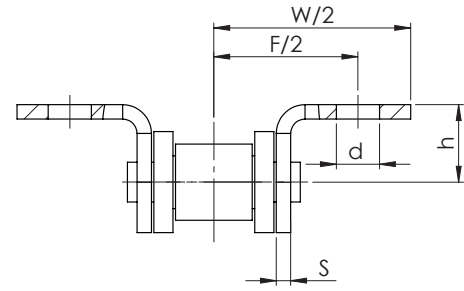
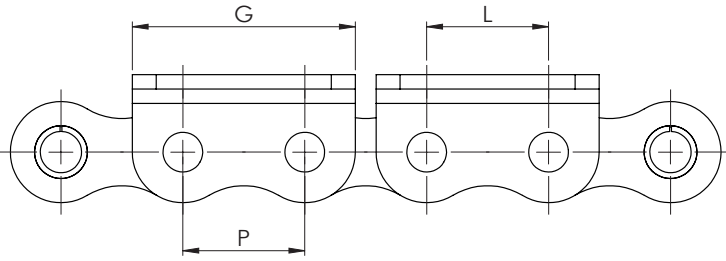
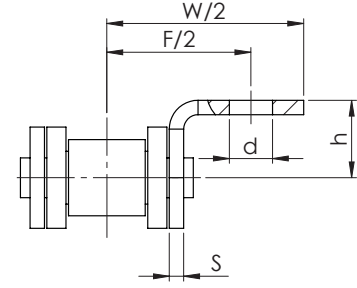
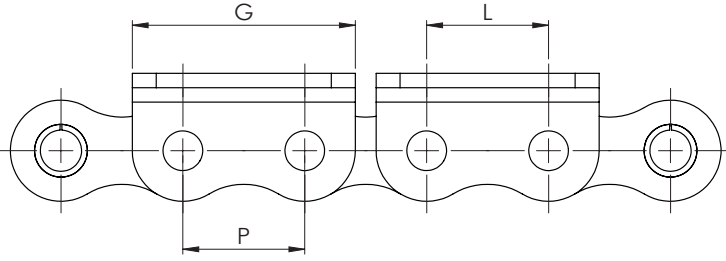
Numune ya da teknik çizime göre üretim yapılır.

Kıvrık Form Ataşmanlar - K1



MAKELSAN NO.	DIN/ISO NO	P mm	G mm	L mm	C mm	F mm	S min	d _s mm
MK.06C1K1	06C	9.525	17.32	9.525	9.50	11.55	1.30	2.8
MK.08A1K1	08A	12.70	23.00	12.70	12.70	15.40	1.50	3.4
MK.85A1K1	085	12.70	22.30	12.70	11.85	16.55	1.30	4.85
MK.10A1K1	10A	15.87	28.80	15.875	15.90	23.05	2.03	5.5
MK.12A1K1	12A	19.05	34.65	19.05	18.30	26.86	2.42	5.5
MK.16A1K1	16A	25.40	45.90	25.40	24.60	35.45	3.25	6.8
MK.20A1K1	20A	31.75	57.65	31.75	31.80	44.00	4.00	9.2
MK.24A1K1	24A	38.10	69.30	38.10	36.50	51.60	4.80	9.8
MK.28A1K1	28A	44.45	80.45	44.45	44.50	62.00	5.60	11.4
MK.32A1K1	32A	50.80	92.00	50.80	50.80	69.85	6.40	13.1
MK.40A1K1	40A	63.50	115.5	63.50	63.50	88.90	8.00	16.3
MK.08B1K1	088	12.70	24.00	12.70	13.35	18.90	1.60	4.3
MK.10B1K1	10B	15.87	29.58	15.875	16.50	22.95	1.70	5.3
MK.12B1K1	12B	19.05	34.05	19.05	21.45	28.60	1.85	6.4
MK.16B1K1	16B	25.40	46.40	25.40	23.15	34.00	3.10	6.4
MK.20B1K1	20B	31.75	58.10	31.75	30.50	45.70	3.50	9.0

Kıvrık Form Ataşmanlar - K2

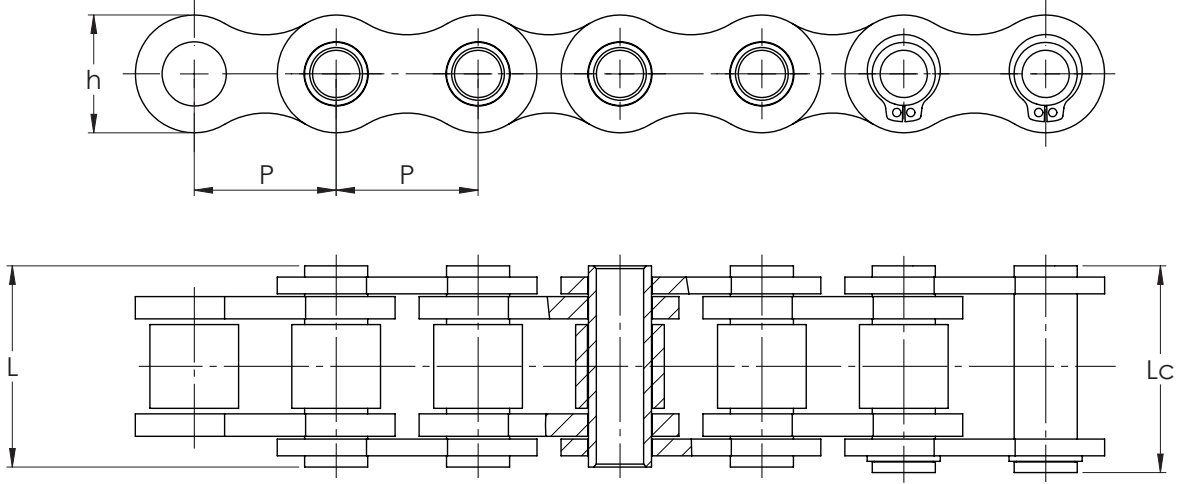


MAKELSAN NO.	DIN/ISO NO	P mm	G mm	L mm	F mm	W mm	S min	h ₄ mm	d ₄ mm
MK.06C1K2	06C	9.525	17.32	9.525	19.00	28.6	1.30	6.35	2.8
MK.08A1K2	08A	12.70	23.00	12.70	25.40	35.6	1.50	7.90	3.4
MK.85A1K2	085	12.70	22.30	12.70	24.00	35.0	1.30	7.20	4.85
MK.10A1K2	10A	15.875	28.80	15.875	31.75	46.8	2.03	10.30	5.5
MK.12A1K2	12A	19.05	34.65	19.05	38.10	56.4	2.42	11.90	5.5
MK.16A1K2	16A	25.40	45.90	25.40	50.80	73.2	3.25	15.90	6.8
MK.20A1K2	20A	31.75	57.65	31.75	63.50	89.8	4.00	19.80	9.2
MK.24A1K2	24A	38.10	69.30	38.10	76.20	108.8	4.80	23.00	9.8
MK.28A1K2	28A	44.45	80.45	44.45	88.90	123.0	5.60	28.60	11.4
MK.32A1K2	32A	50.80	92.00	50.80	101.60	142.8	6.40	31.75	13.1
MK.40A1K2	40A	63.50	115.5	63.50	127.00	179.0	8.00	42.88	16.3
MK.08B1K2	088	12.70	24.00	12.70	25.40	36.4	1.60	8.90	4.3
MK.10B1K2	10B	15.875	29.58	15.875	31.80	44.6	1.70	10.31	5.3
MK.12B1K2	12B	19.05	34.05	19.05	38.10	52.4	1.85	13.46	6.4
MK.16B1K2	16B	25.40	46.40	25.40	50.80	72.6	3.10	15.88	6.4
MK.20B1K2	20B	31.75	58.10	31.75	63.00	100.5	3.50	19.80	9.0
MK.24B1K2	24B	38.10	71.30	38.10	76.20	108.4	4.80	26.67	10.5
MK.28B1K2	28B	44.45	81.1	44.45	88.90	123.0	6.00	28.58	13.1
MK.32B1K2	32B	50.80	92.8	50.80	101.6	142.8	6.00	31.75	13.1

Numune ya da teknik çizime göre üretim yapılır.

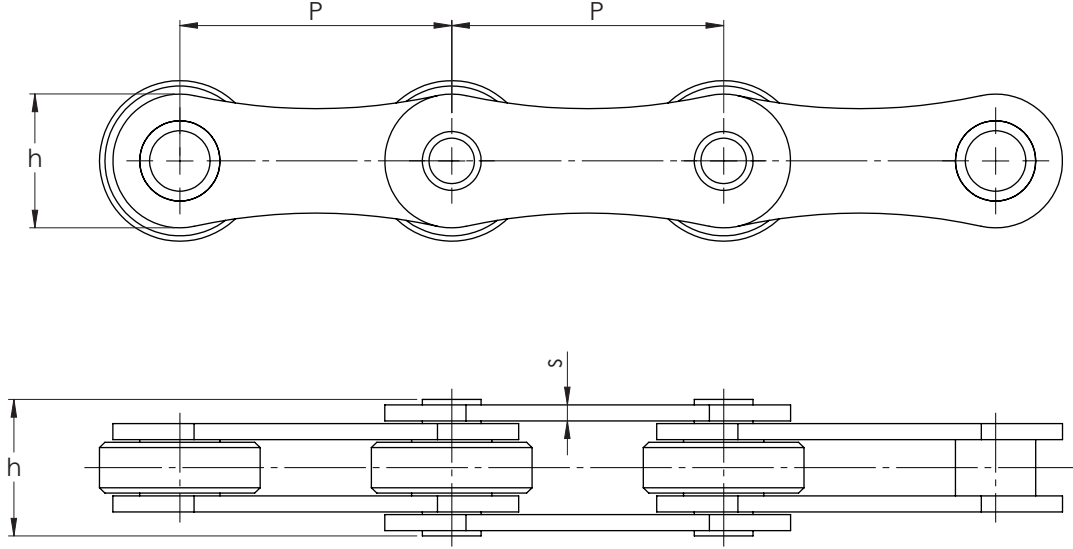
Pim Delikli Zincirler

FORM A



Numune ya da teknik çizime göre üretim yapılır.

FORM B



MAKELSAN NO.	P mm	d ₁ max mm	b ₁ min. mm	d ₂ mm max.	d ₃ min. mm	L max mm	Lc max mm	h max mm	s max. mm	Q min kN	q Kg/m	FORM
MKA.00HP.1270	12.07	8.51	7.75	6.55	4.50	16.4	17.6	11.80	1.60	11.1	0.86	A
MKA.01HP.1587	15.87	10.16	9.65	7.02	5.13	19.5	20.5	14.70	1.70	10.0	1.09	A
MKA.02HP.1950	19.050	12.07	11.68	8.09	6.00	22.7	23.9	16.10	1.85	14.00	1.35	A
MKA.03HP.2540	25.04	15.88	15.75	11.40	8.05	32.5	33.8	24.00	3.25	45.00	2.28	B
MKA.04HP.5000	50.000	31.00	15.00	13.20	10.20	36.5	38.0	25.00	4.00	40.00	3.40	B
MKA.05HP.3810	38.100	20.00	8.00	8.00	5.30	19.6	20.7	17.30	2.03	28.00	0.98	B
MKA.06HP.3810	38.100	20.00	18.00	10.50	5.10	39.0	40.3	22.00	4.00	60.00	2.59	B
MKA.07HP.5080	50.800	30.00	10.50	11.40	8.20	27.4	28.6	26.00	3.10	50.00	2.56	B
MKA.08HP.5000	50.000	30.00	10.50	11.40	8.20	27.4	28.6	26.00	3.10	50.00	2.23	B
MKA.09HP.6350	63.500	30.00	10.00	11.40	8.10	26.7	28.1	26.50	3.10	50.00	2.07	B
MKA.10HP.6350	63.500	40.00	10.00	11.40	8.10	26.7	28.1	26.50	3.10	50.00	2.27	B
MKA.11HP.6350	63.500	40.00	20.00	11.40	8.10	36.7	38.1	26.50	3.10	50.00	3.20	B
MKA.12HP.6350	63.500	40.00	15.00	11.40	8.20	35.6	37.0	26.50	4.00	35.00	3.90	B
MKA.13HP.1000	10.000	30.00	10.50	11.40	8.20	27.4	28.6	26.00	3.10	50.00	1.56	B

Numune ya da teknik çizime göre üretim yapılır.